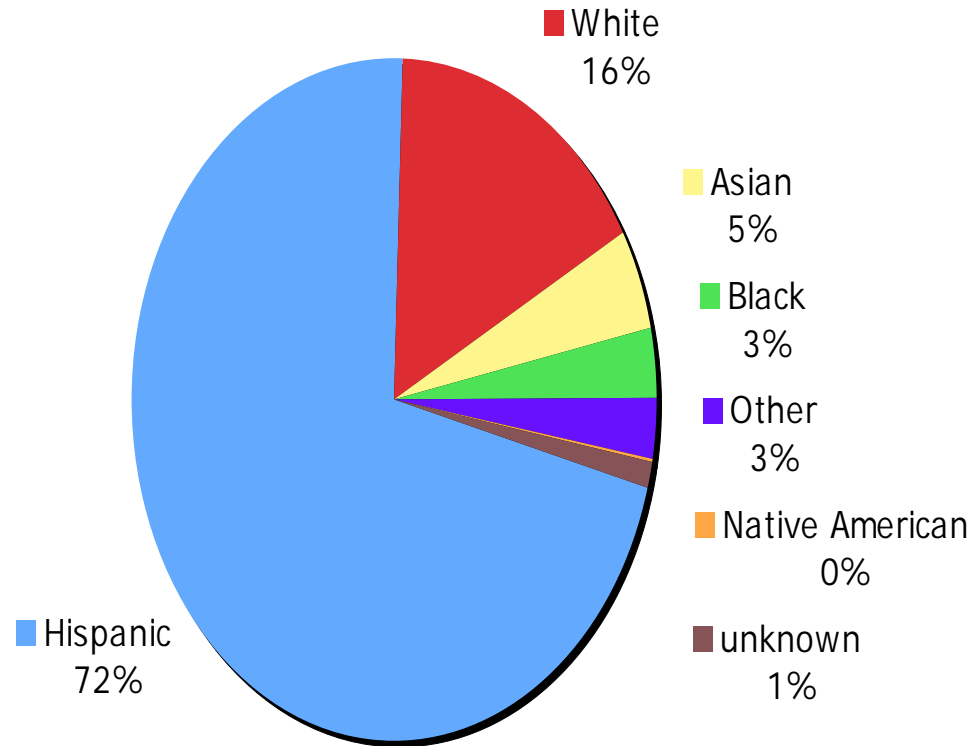
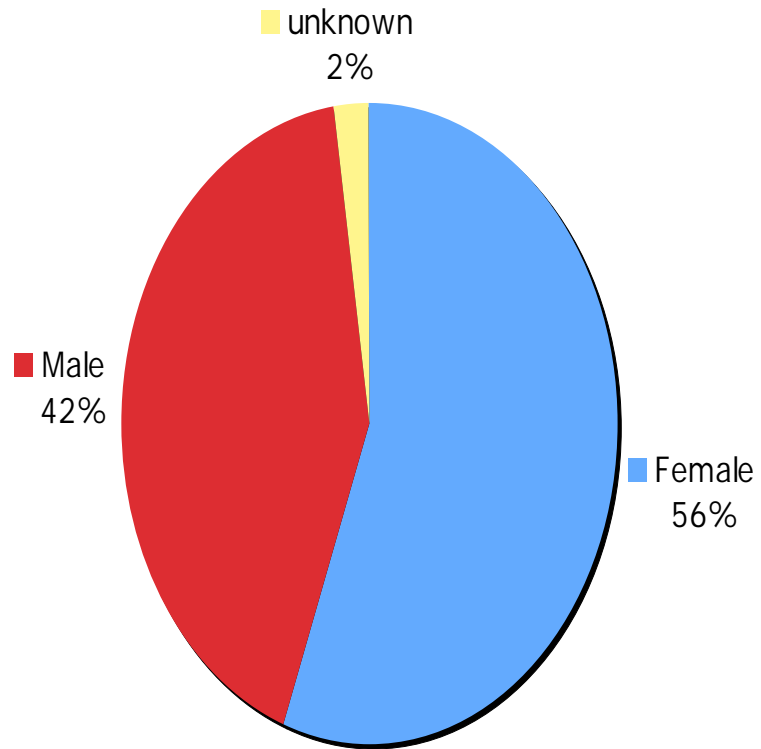


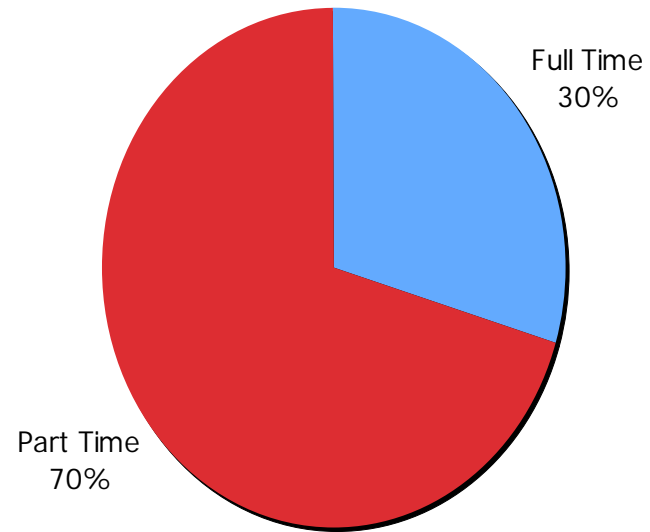
Ethnicity



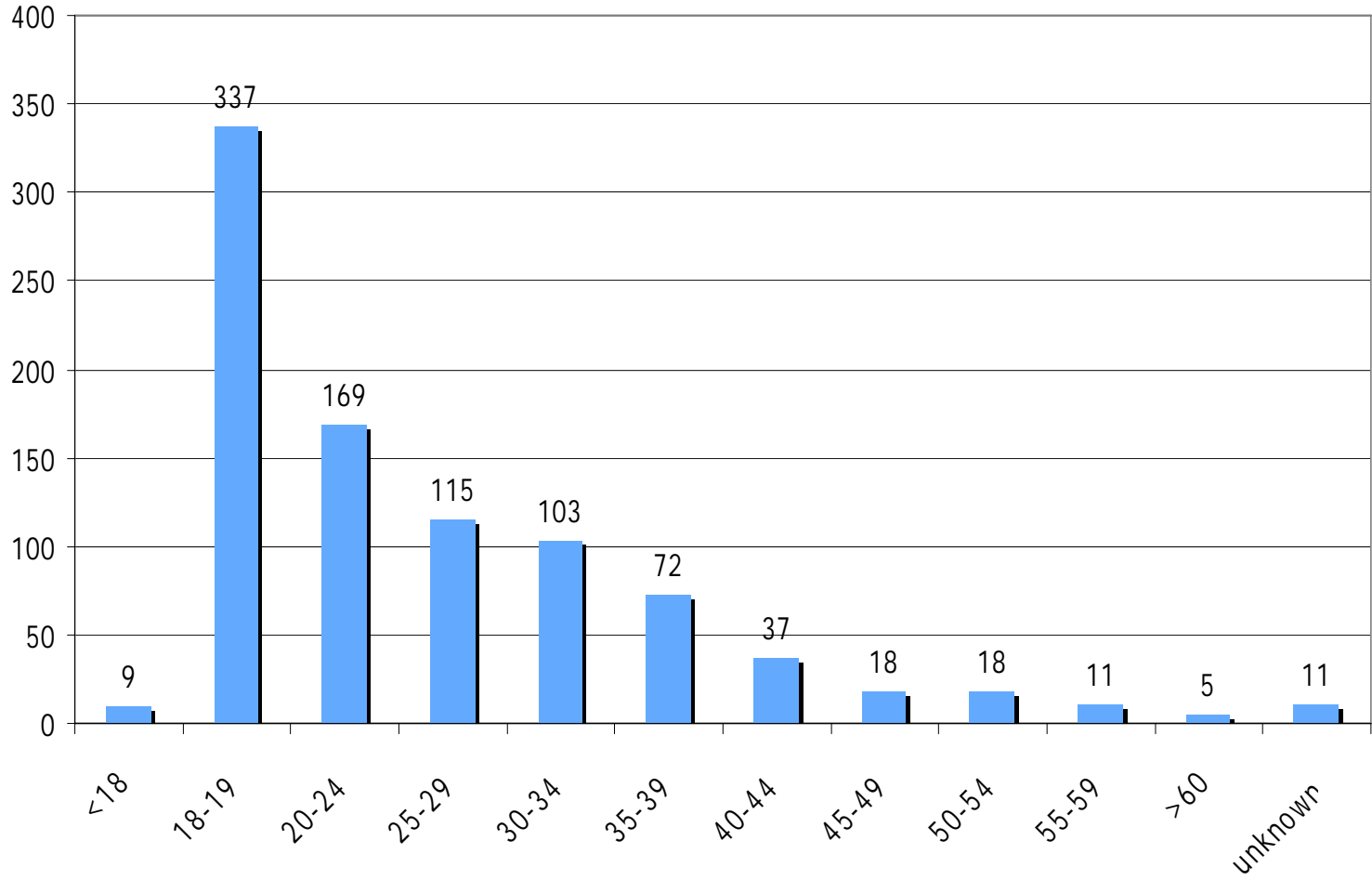
Gender



Load



Age



Persistence by Ethnicity

Students Fall 04 Spr05 Fall05 Spr 06

Hispanic 646 384 251 186

White 149 108 89 81

Asian 42 32 22 17

Black 30 14 10 6

Percentage Fall 04 Spr05 Fall05 Spr 06

Hispanic 100.0% 59.4% 38.9% 28.8%

White 100.0% 72.5% 59.7% 54.4%

Asian 100.0% 76.2% 52.4% 40.5%

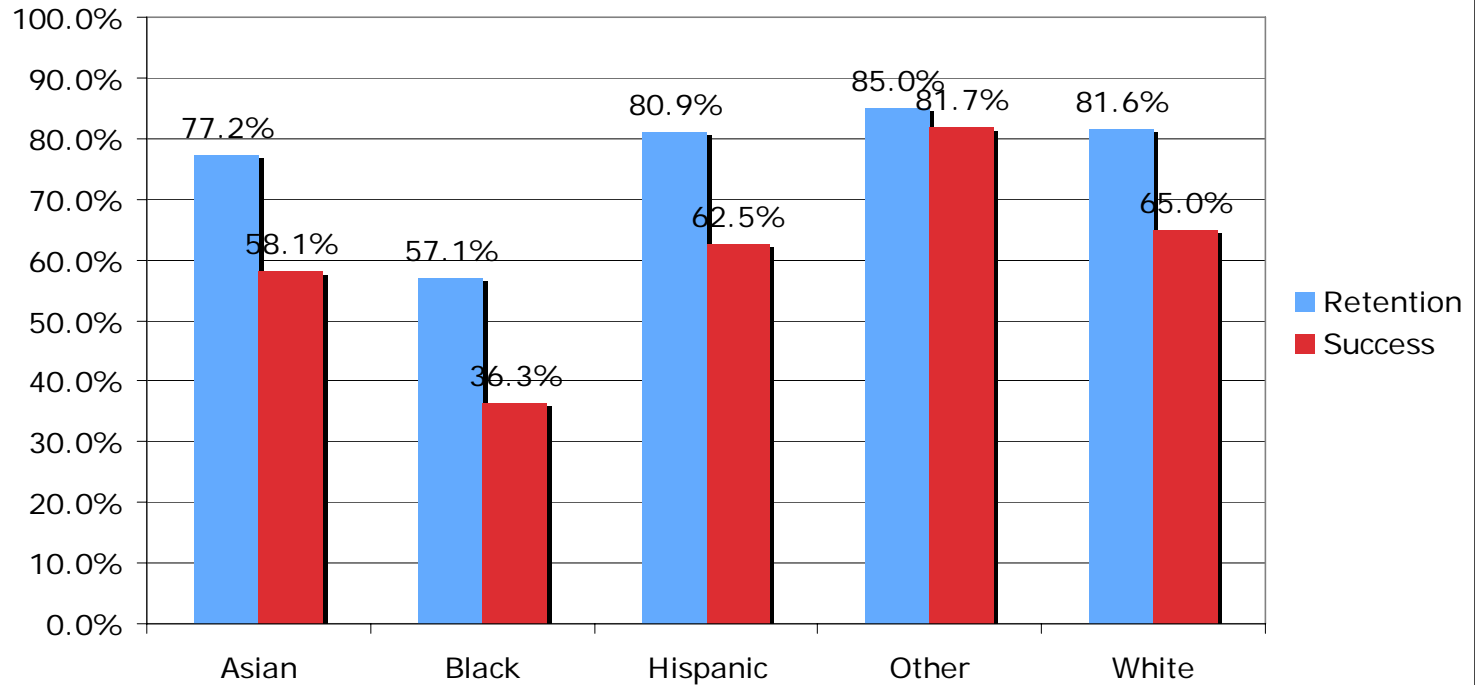
Black 100.0% 46.7% 33.3% 20.0%

Persistence by Cohort

Students	Fall 04	Spr 05	Fall 05	Spr 06
ESL	470	267	171	117
Remedial Math	270	228	183	151
Remedial English	217	193	150	125
Remedial Reading	212	181	142	118
Transfer	151	66	40	40

Percentage	Fall 04	Spr 05	Fall 05	Spr 06
ESL	100%	56.8%	36.4%	24.9%
Remedial Math	100%	84.4%	67.8%	55.9%
Remedial English	100%	88.9%	69.1%	57.6%
Remedial Reading	100%	85.4%	67.0%	55.7%
Transfer	100%	43.7%	26.5%	26.5%

Retention & Success by Ethnicity

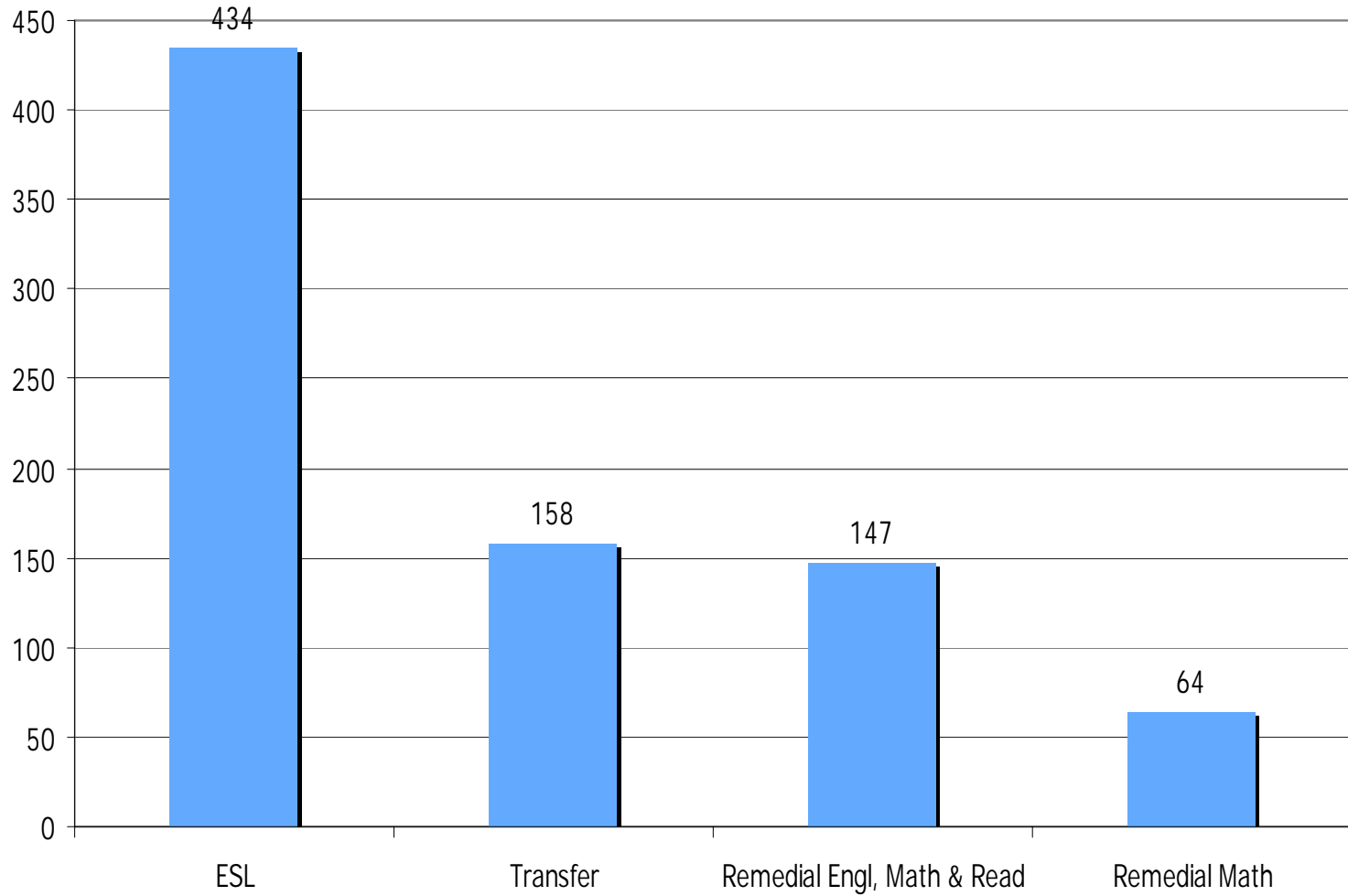


Units & Load by Cohort

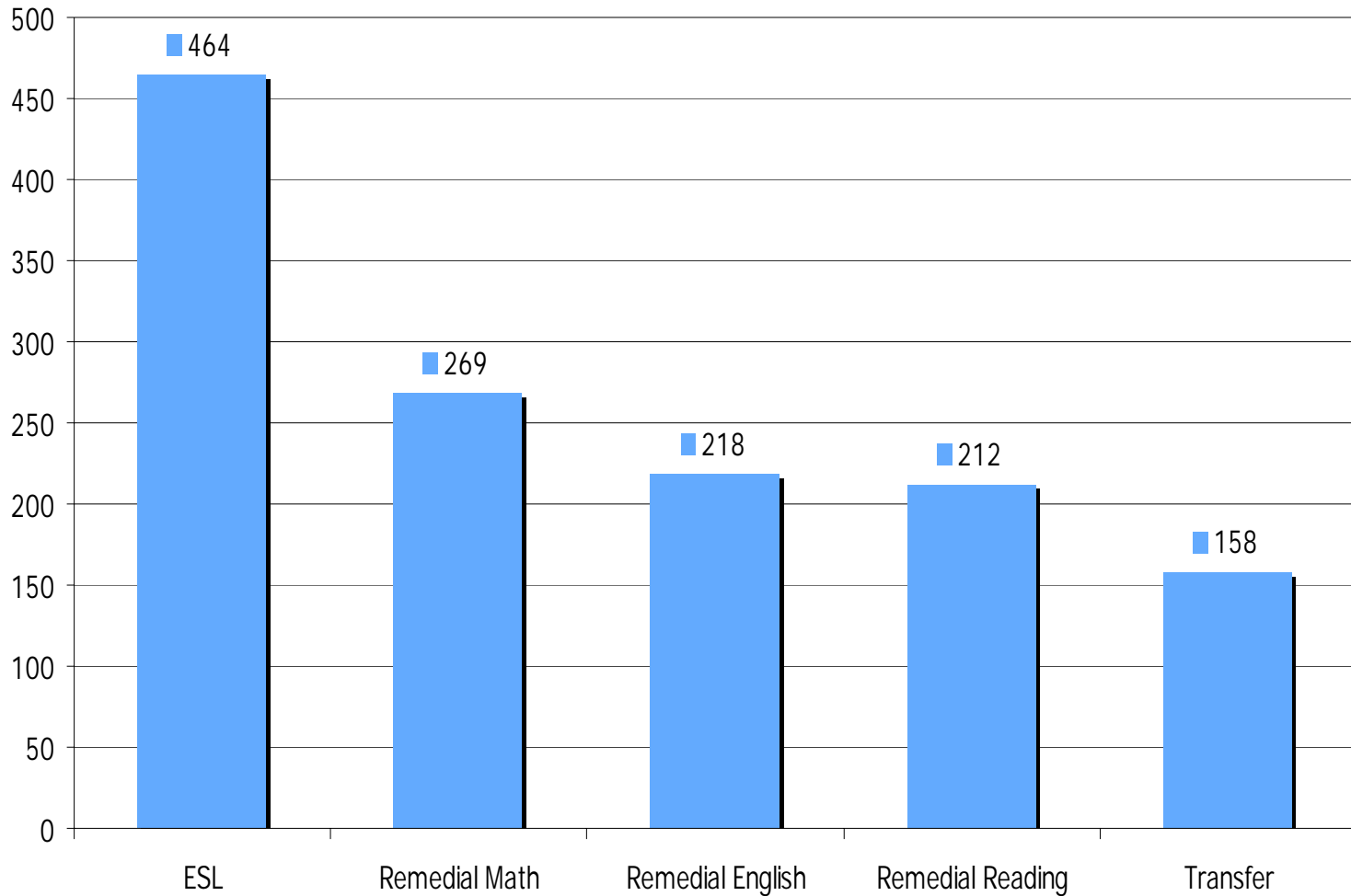
Units	Fall 04	Spr 05	Fall 05	Spr 06	Total
ESL	2743	1796	1207.5	837	6583.5
Remedial Math	3146	2603	2003.5	1606	9358.5
Remedial English	2617.5	2196.5	1633	1306.5	7753.5
Remedial Reading	2496	2065	1546	1260.5	7367.5
Transfer	793	500	359	380	2032

Load	Fall 04	Spr 05	Fall 05	Spr 06	Total
ESL	5.8	6.7	7.1	7.2	14.0
Remedial Math	11.7	11.4	10.9	10.6	34.7
Remedial English	12.1	11.4	10.9	10.5	35.7
Remedial Reading	11.8	11.4	10.9	10.7	34.8
Transfer	5.3	7.6	9.0	9.5	13.5

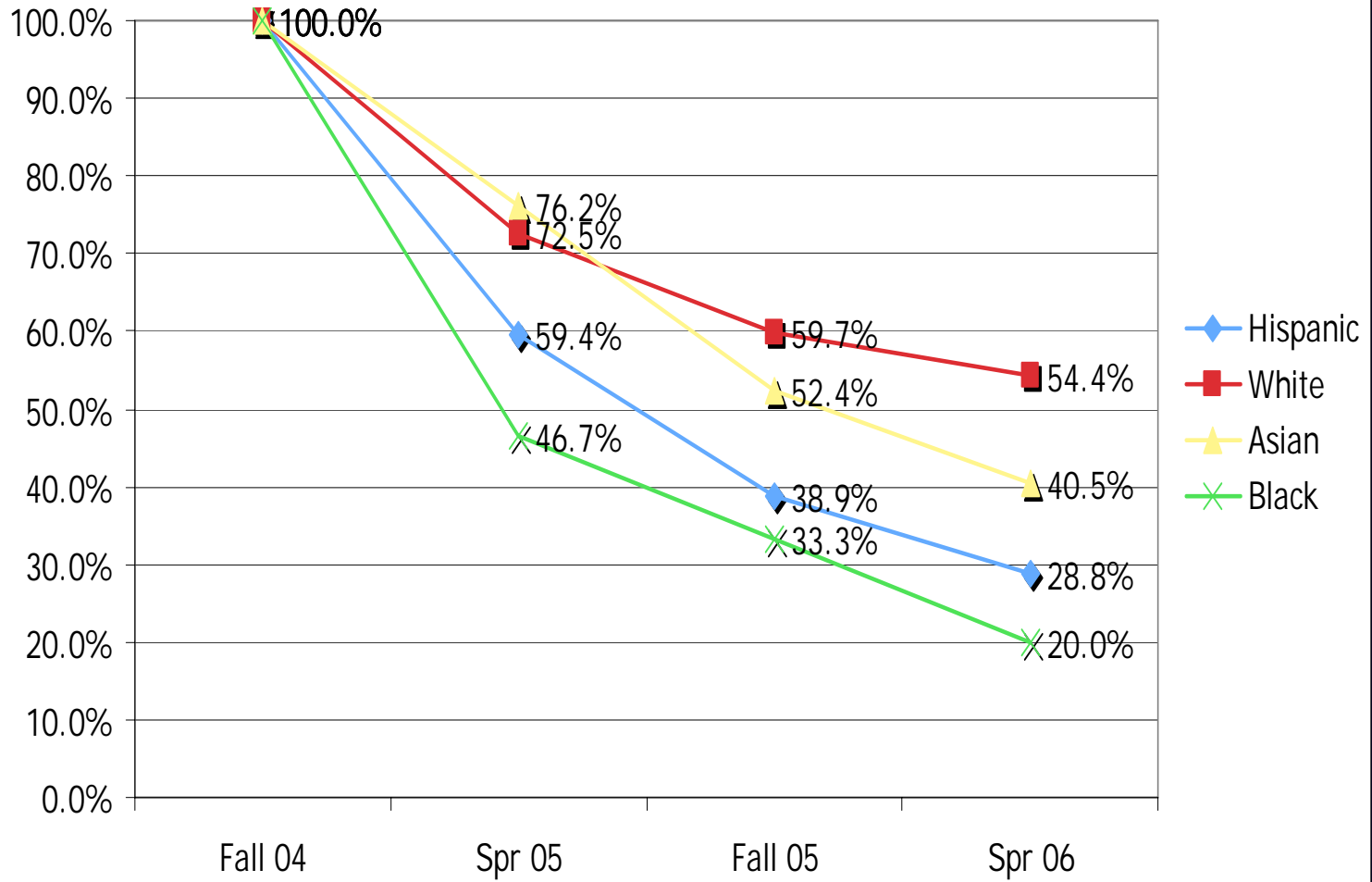
Cohorts (unique)



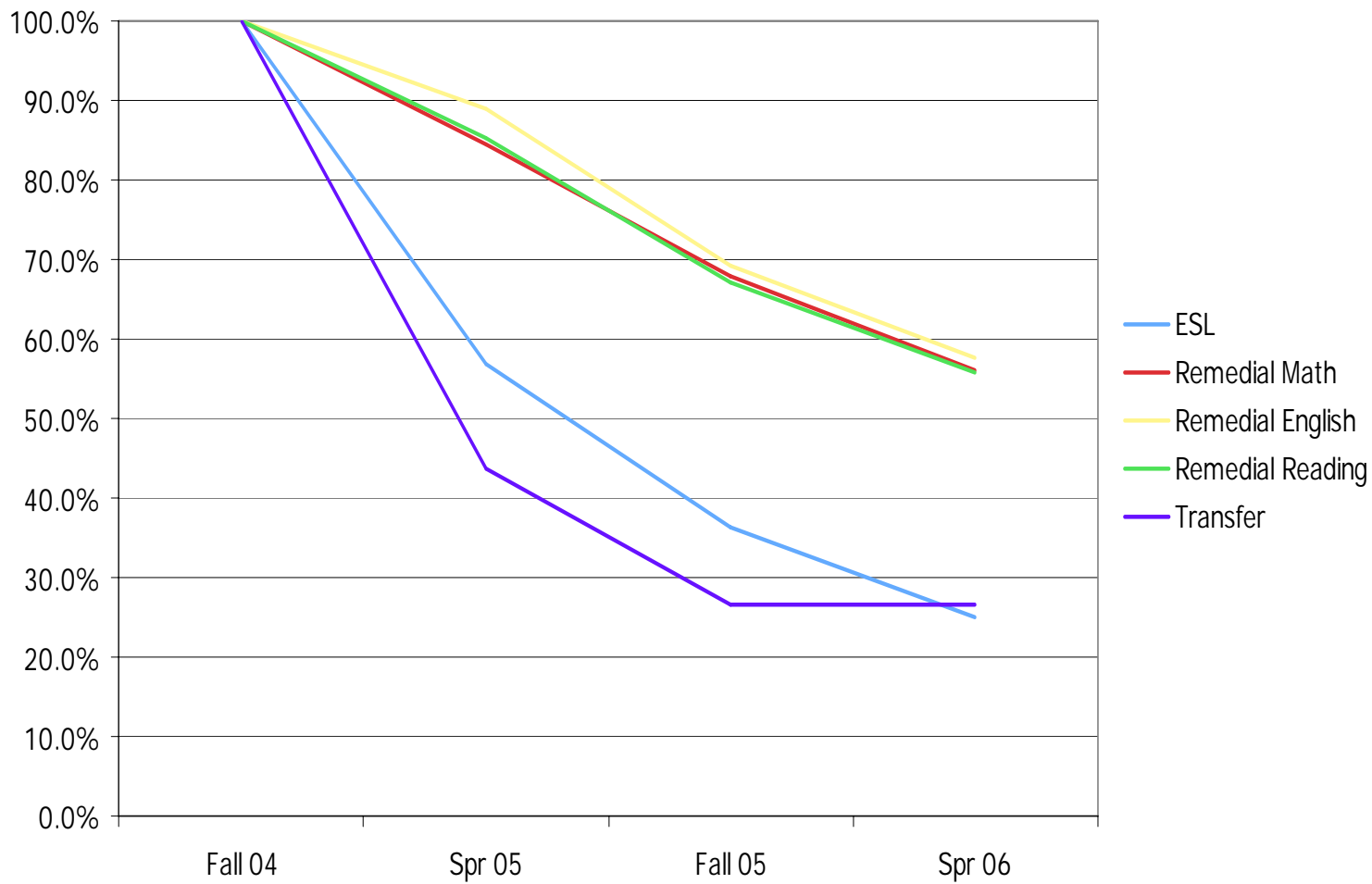
Cohorts (non-unique)



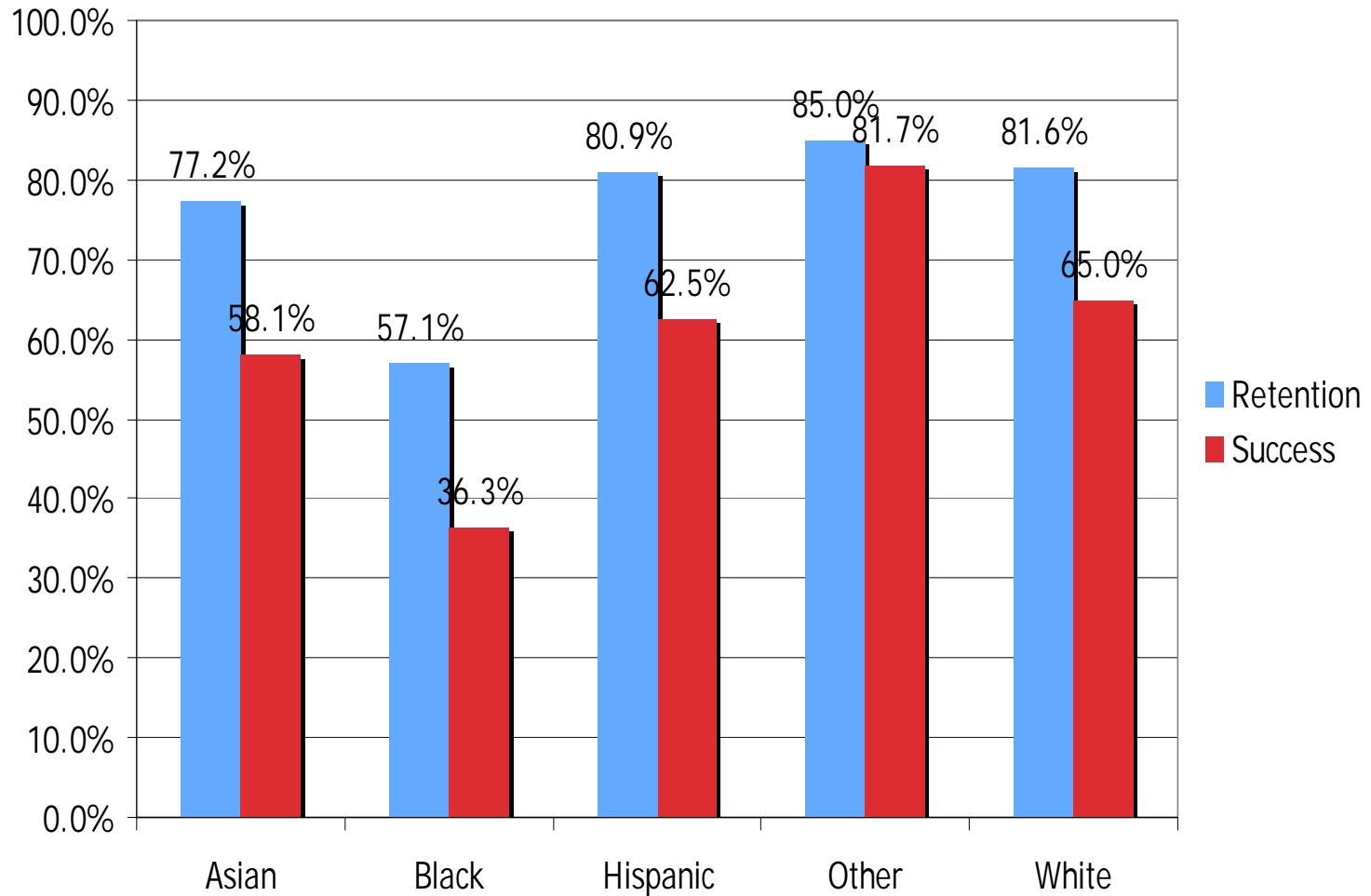
Persistence by Ethnicity



Persistence by Cohort



Retention & Success by Ethnicity



Retention & Success by Cohort

