

## Emergency Communications


SMCCCD Home > Emergency Communications > Emergency Communications

- Home
- Preparing for an Emergency
- Emergency Communications
- Building Captain Program
- Our Partners
- Emergency Action Plan (EAP)
- Organization and Policies

## Emergency Communications

It is critical that the SMCCCD community is aware and informed of possible or ongoing emergencies. Learn more about our communication methods and sign up to get notified.

SMCCCD EMERGENCY COMMUNICATION



SMCCCD AlertMe is the notification system serving the SMCCCD community. Emergency notifications are sent via Rave Mobile Safety platform upon confirmation of a significant emergency or dangerous situation occurring on the campus that involves an immediate threat to the health and safety of students, staff, faculty, and community members.

Your @smccd.edu email address will be automatically registered into Rave. Please use your CELL PHONE NUMBER and **NOT** a

### AlertMe (RAVE)

SMCCCD AlertMe (RAVE) is the notification system serving the SMCCCD community.

[View more information here.](#)

San Mateo County Community College District Alert Levels Updated December 11, 2024				
	CRISIS ALERT (Critical Incident)	CAMPUS/STUDENT BODY Emergency Notification	EMERGENCY ALERT (Emergency Notification)	CRITICAL ALERT (Critical Incident)
Purpose	On-site response to a critical incident requiring immediate action.	Immediate alert to students, employees, and the community about a dangerous situation or emergency.	On-site response to a critical incident requiring immediate action.	On-site response to a critical incident requiring immediate action.
What is it?	On-site response to a critical incident requiring immediate action.	Immediate alert to students, employees, and the community about a dangerous situation or emergency.	On-site response to a critical incident requiring immediate action.	On-site response to a critical incident requiring immediate action.
Who is sent the alert?	On-site response to a critical incident requiring immediate action.	Immediate alert to students, employees, and the community about a dangerous situation or emergency.	On-site response to a critical incident requiring immediate action.	On-site response to a critical incident requiring immediate action.
What do we need the alert?	On-site response to a critical incident requiring immediate action.	Immediate alert to students, employees, and the community about a dangerous situation or emergency.	On-site response to a critical incident requiring immediate action.	On-site response to a critical incident requiring immediate action.
Who needs to approve it?	On-site response to a critical incident requiring immediate action.	Immediate alert to students, employees, and the community about a dangerous situation or emergency.	On-site response to a critical incident requiring immediate action.	On-site response to a critical incident requiring immediate action.
Who sends the alert?	On-site response to a critical incident requiring immediate action.	Immediate alert to students, employees, and the community about a dangerous situation or emergency.	On-site response to a critical incident requiring immediate action.	On-site response to a critical incident requiring immediate action.
How?	On-site response to a critical incident requiring immediate action.	Immediate alert to students, employees, and the community about a dangerous situation or emergency.	On-site response to a critical incident requiring immediate action.	On-site response to a critical incident requiring immediate action.

### SMCCCD Alert Levels

Please view the SMCCCD Alert Level chart here: [\[Link\]](#)



### SMCCCD Emergency Contact Lists

[View SMCCCD Emergency Contact Lists here](#)

SAN MATEO COUNTY  
COMMUNITY  
COLLEGE DISTRICT

Emergency Notifications

### SMCCCD Emergency Website

[Visit SMCCCD Emergency Website for more information](#)



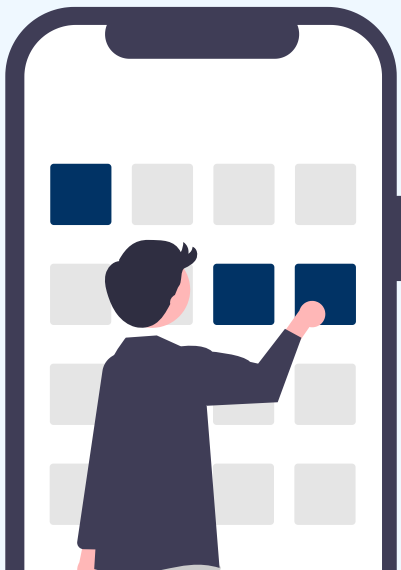
### View SMCCCD Crisis Communications Plan (CCP)

[View the District's crisis communication plan here:](#)



### Public Information Office

[Get to know your Public Information Officers!](#)



### Emergency vs. Operational Messaging Requirements

For more information, please view

[Requirements For Emergency Text Messages.](#) [\[Link\]](#)

## San Mateo County Community College District

The SMCCCD is a three-college district located between San Francisco and San Jose in the Silicon Valley. Our Colleges serve nearly 20,000 students each year and offer the first two years of instruction in a wide variety of degree and transfer programs, as well as vocational-technical programs.

## Contact

**District Office**  
3401 CSM Drive  
San Mateo, CA 94402 USA  
(650) 574-6550  
TTY call 711 or visit CA Relay Services  
[webmaster@smccd.edu](mailto:webmaster@smccd.edu)

## [smccd.edu](http://smccd.edu)

[Home](#)  
[Departments](#)  
[Employment](#)  
[Title IX](#)  
[Accessibility](#)  
[Report Fraud](#)  
[Contact](#)