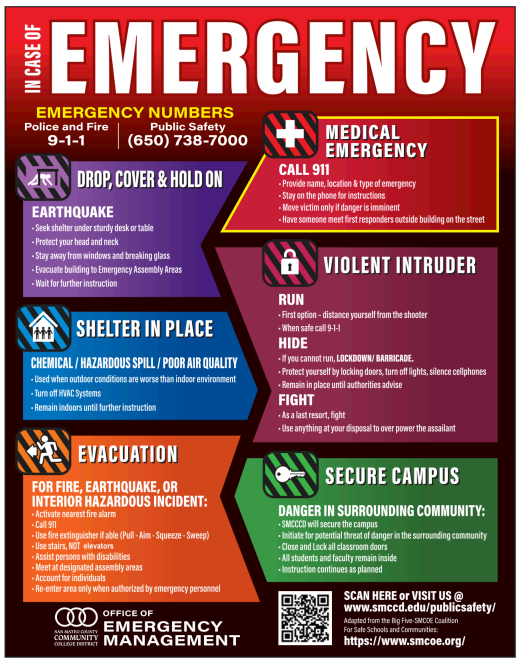


The Office of Emergency Management (OEM)

Our Mission

The San Mateo County Community College District Office of Emergency Management (SMCCCD OEM) strives to safeguard individuals and assets while ensuring the uninterrupted functioning of businesses and educational activities. To achieve this goal, the OEM will oversee the coordination and integration of all essential tasks to enhance our ability to reduce risks, make preparations, and effectively respond to and recover from potential natural disasters, acts of terrorism, or any other human-induced calamities. The Office of Emergency Management strives to create a culture of empowerment and excellence through providing consistent direction, transparency, and clarity of expectations throughout all phases of emergency management.

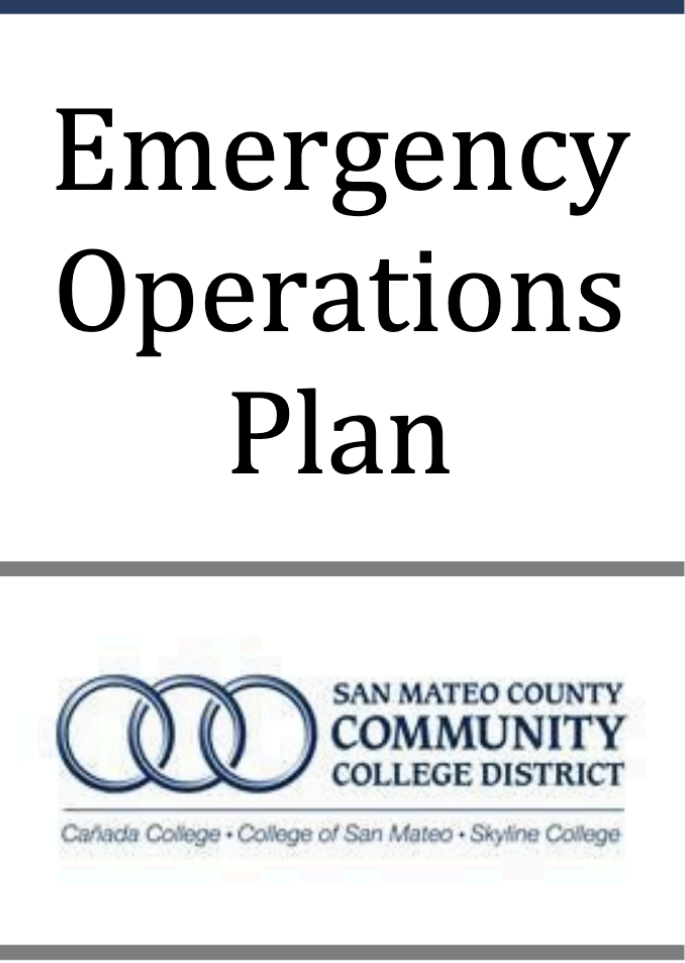
[Learn more about our vision and commitment to equity →](#)



SMCCCD Emergency Action Plan (EAP)

The Emergency Action Plan provides designated actions employers and employees must take to ensure employee safety from fire and other emergencies. The booklet offers District personnel-specific emergency procedures, methods to account for personnel, rescue/medical procedures, shutdown guidelines, and emergency mapping.

[View Emergency Action Plan →](#)



SMCCCD Emergency Operations Plan (EOP)

Learn more about our partnerships on campus and in the local community, and how we work together to make our campus safer. Click here to view all SMCCCD Emergency Operation Plans.

[View Emergency Operations Plan →](#)

Preparing for an Emergency

Learn more about how you can prepare and be ready before an emergency occurs. Find checklists for how to prepare yourself and others for specific types of hazards and emergencies, how to practice situational awareness, and how to recognize suspicious behavior.

[Get prepared →](#)

Emergency Notifications

It is critical that the SMCCCD community is aware and informed of possible or ongoing emergencies. Learn more about our communication methods and sign up to get notified.

[Sign up for communications →](#)

Building Captain, Training Information & Resources

Find out about district programs that you can be a part of to improve our preparation and response to emergencies. By getting involved, you can help us take proactive steps to prepare our community for potential emergencies or disasters.

[Learn about outreach programs →](#)

Our Partnerships

Learn more about our partnerships on campus and in the local community, and how we work together to make our campus safer.

Emergency Medical Equipment & Supplies

The San Mateo County Community College District maintains fully stocked EMS supplies across all campuses, including trauma kits, AEDs, first aid kits, and emergency go-bags to support immediate medical response. These resources ensure compliance with safety standards and enhance preparedness for a wide range of emergencies.

Training Information & Resources

Watch training videos, view training slides, and browse laws and regulations.

[Meet Our Partners →](#)

[View EMS Supplies Here !\[\]\(529949c2c3dadbaa4e538e8c643454bc_img.jpg\)](#)

[View Training and Resources →](#)

San Mateo County Community College District

The SMCCCD is a three-college district located between San Francisco and San Jose in the Silicon Valley. Our Colleges serve nearly 20,000 students each year and offer the first two years of instruction in a wide variety of degree and transfer programs, as well as vocational-technical programs.

Contact

District Office
3401 CSM Drive
San Mateo, CA 94402 USA
(650) 574-6550
TTY call 711 or visit CA Relay Services
webmaster@smccd.edu

smccd.edu

[Home](#)
[Departments](#)
[Employment](#)
[Title IX](#)
[Accessibility](#)
[Report Fraud](#)
[Contact](#)