



Credit

Student Success and Support Program Plan

2015-16

District: San Mateo County Community College
College: Canada College

Report Due by
Friday, October 30, 2015

Email PDF of completed plan to:

cccssp@cccco.edu

and

Mail signature page with original signatures to:

Patty Falero, Student Services and Special Programs Division

California Community Colleges Chancellor's Office

1102 Q Street, Suite 4554

Sacramento, CA 95811-6549

Instructions for Completion of the College Student Success and Support Program Plan

INTRODUCTION

The purpose of the credit Student Success and Support Program (SSSP) Plan is to outline and document how the college will provide SSSP services to credit students¹. The goal of this program is to increase student access and success by providing students with core SSSP services to assist them in achieving their educational and career goals.

More specifically, colleges are to:

- Provide **at least** an abbreviated student education plan (SEP) to all entering students with a priority focus on students who enroll to earn degrees, career technical certificates, transfer preparation, or career advancement.
- Provide orientation, assessment for placement, and counseling, advising, and other education planning services to all first-time students².
- Provide students with any assistance needed to define their course of study and develop a comprehensive SEP by the end of the third term but no later than completion of 15 units.
- Provide follow-up services to at-risk (students enrolled in basic skills courses, students who have not identified an education goal or course of study, or students on academic or progress probation).

INSTRUCTIONS AND GUIDELINES

Please carefully review these instructions and resources, including the SSSP Handbook, relevant sections of the Education Code and title 5 regulations before completing the program plan.

The program plan is set up as a Word document. As you enter your responses below each question, the document will expand to accommodate the information provided. *Colleges are to use the template as provided.* When complete, also save the document as a PDF file and email it as an attachment to cccssp@ccc.co.edu with the name of the college and “SSSP Credit Program Plan” in the subject line. Mail the signature page with the original signatures, along with the separate Budget Plan signature page, by the due date (Oct. 30th).

The program plan is to be submitted on an annual basis³. When writing the program plan, assume that the reader knows nothing about your program and will have only your document to understand the delivery of program services and resources needed for implementation. Be sure to include input from faculty, staff, administrators and students in the development of this plan (per title 5, §55510[b]).

All state-funded SSSP services, procedures, and staff activities must be described in the program plan. Section 78211.5(b) of the Education Code permits districts and colleges to expend these categorical funds only on SSSP activities approved by the Chancellor. Please be sure all expenditures are

¹ Colleges operating SSSP programs for noncredit students must prepare a separate noncredit plan.

² A first-time student is defined as a student who enrolls at the college for the first time, excluding students who transferred from another institution of higher education, and concurrently enrolled high school students.

³ The program plan is now required on an annual basis due to new SSSP requirements focusing funding on core services, changes related to priority enrollment, mandatory core services, and the significant increases in funding in 2013-14, 2014-15 and 2015-16. As implementation and funding stabilizes, this requirement may be revisited.

consistent with the [SSSP Funding Guidelines](#) or your plan may not be approved. The information provided and the funding source should be clearly indicated in the plan narrative and correspond with expenditures listed in the Budget Plan. In districts with more than one college, the college program plan must also address any portion of the college's allocation expended by the district. The program and budget plans will also be compared with the colleges' credit SSSP Year-End Expenditure Report to monitor for consistency. Note that SSSP funds may not be used to supplant general or state categorical (restricted) funds currently expended on SSSP activities. Any services provided should supplement--not supplant--any services provided to students currently participating in college categorical programs and any other federal, state, and local programs.

The SSSP Plan is divided into six sections. The Budget Plan is a separate document.

- I. Program Plan Signature Page
- II. Planning & Core Services
 - A. Planning
 - B. Orientation
 - C. Assessment for Placement
 - D. Counseling, Advising, and Other Education Planning Services
 - E. Follow-up for At-Risk Students
 - F. Other SSSP/Match Expenditures
- III. Policies
 - A. Exemption Policy
 - B. Appeal Policies
 - C. Prerequisite and Corequisite Procedures
- IV. Professional Development
- V. Attachments

Links to program resources are provided below to assist with the development of your SSSP Plan.

RESOURCES

- [Seymour-Campbell Student Success Act of 2012](#)
- [California Code of Regulations](#)
- [Chancellor's Office Student Equity web page](#)
- [Accrediting Commission for Community and Junior Colleges](#)
- [Chancellor's Office Basic Skills website](#)

SECTION I. STUDENT SUCCESS AND SUPPORT PROGRAM PLAN SIGNATURE PAGE

College Name: Canada College

District Name: San Mateo County Community College

We certify that funds requested herein will be expended in accordance with the provisions of Chapter 2 (commencing with Section 55500) of Division 6 of title 5 of the *California Code of Regulations* and *California Education Code* sections 78210-78219.

Signature of College SSSP Coordinator: _____

Name: Lizette Bricker- Dean of Counseling Date: _____

Signature of the SSSP Supervising Administrator
or Chief Student Services Officer: _____

Name: Kim Lopez, Vice President of Student Services Date: _____

Signature of the Chief Instructional Officer: _____

Name: Gregory Anderson, Vice President of Instruction Date: _____

Signature of College Academic Senate President: _____

Name: Doug Hirzel, Professor Date: _____

Signature of College President: _____

Name: Larry G. Buckley, PhD., College President Date: _____

Contact information for person preparing the plan:

Name: Jackie Flores Title: Division Assistant, Counseling

Email: floresj@smccd.edu Phone: (650) 306-3118

SECTION II. PLANNING & CORE SERVICES

Directions: Please provide a brief but thorough answer to each of the following questions relating to how your college is meeting the requirements to provide core services under title 5, section 55531. Do not include extraneous information outside the scope of SSSP. Projected expenditures should correspond to items listed in the Budget Plan. Answers should be entered in the document below each question.

A. Planning**1. a. Describe the planning process for updating the 2015-16 SSSP Plan.**

The planning process for updating the 2015-16 plan was based on input from the Counseling Department, Welcome Center, and Shared Governance committees including Student Senate, Student Services Planning Council, Instructional Planning Council, Academic Planning Council, Academic Senate, and Classified Senate. We present the new plan, obtain feedback, and incorporate into the new plan. In addition, we reviewed Orientation to Registration pipeline data and set goals to increase the completion of the matriculation process for students who apply each semester. These goals are part of our Educational Master Plan that is also approved through shared governance.

b. What factors were considered in making adjustments and/or changes for 2015-16?

In the review and re-drafting of the new plan, we considered the feedback from the 2014-15 review. Some of the items we incorporated in the new plan came from the following review feedback:

- More information on partnerships like Adult Education
- Special or Extended Orientation programs
- Include counseling services for special groups like CTE, Foster Youth, etc.
- Highlight courses that support counseling services
- More information on the collaboration with Student Equity

c. In multi-college districts, describe how services are coordinated among the colleges.

The San Mateo County Community College District (SMCCCD) is comprised of three colleges: Cañada, Skyline and the College of San Mateo. The three colleges coordinate policies and Student Success and Support Program services through the Enrollment Services Committee (ESC). The ESC meets monthly and the committee is comprised of all the Vice Presidents of Student Services, Deans of Counseling and Enrollment Services, Registrars and Institutional Technology (IT) staff. The ESC directed the development of the SSSP MIS data reporting elements, updating the districts priority enrollment policy and the development of the SSSP

Plans. The ESC will continue to serve as the main coordinating body for the implementation of the SSSP at the three colleges in the San Mateo Community College District.

d. Briefly describe how the plan and services are coordinated with the student equity plan and other district/campus plans (e.g., categorical programs) and efforts including accreditation, self-study, educational master plans, strategic plans, Institutional Effectiveness, the Basic Skills Initiative, Adult Education (Assembly Bill 86), and departmental program review.

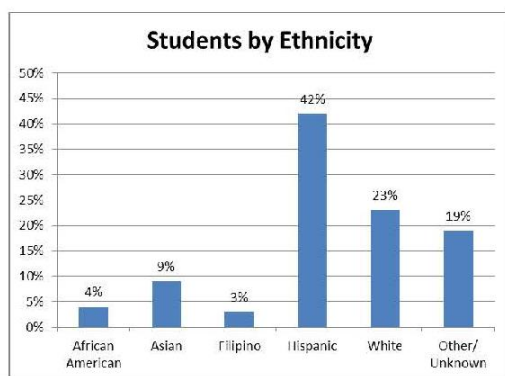
The Dean of Counseling serves on the ACES Committee (Student Equity and Basic Skills), the Accreditation Steering Committee, the Educational Master Plan, as well as, provides leadership in the development of all program reviews in the Counseling Division. This position will serve as the primary bridge ensuring that coordination of effort (including financial resources) occurs in the key areas of the Student Success and Support Program. In addition, all the plans noted above must participate in the shared governance process at the college to ensure that all faculty and staff have the opportunity to learn about and provide input into the development of each plan. Examples of the 2014-15 coordinated efforts with the SSSP Plan and the Student Equity Plan and Basic Skills Initiative includes the following:

1. Implementation of alternative assessment measures (High School transcripts)
2. Share in funding the DRC/LD Counselor
3. Share in funding the Basic Skills Counselor
4. Implementation of the Puente Program
5. Implementing the S.T.O.P workshops

2. Describe the college's student profile.

Ethnicity of Student

The College has 42% Hispanic students, 23% white, 9% Asian, and 4% African American.

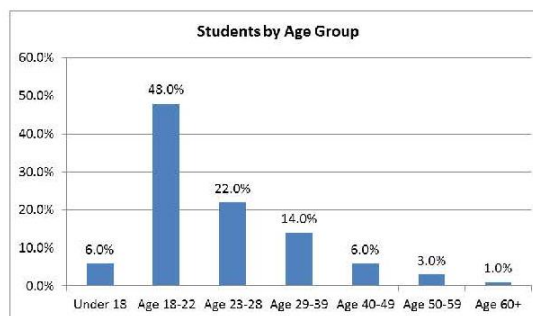


Gender of Student

The College's student population is composed of 38% male and 59% female.

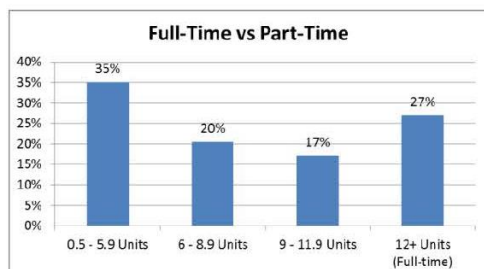
Age of Students

Forty-eight percent of the College students are between ages 18-22.



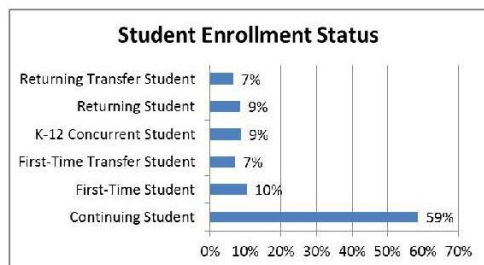
Full-time vs Part-time

Most of the College students (73%) are part-time students. Only 27% of students are full-time (12+ units) students.



New Students

First time students enrolled in the College is 10% percent. First time transfer students from another college is 7%. Majority of our students are continuing students (59%).



Geographic Location

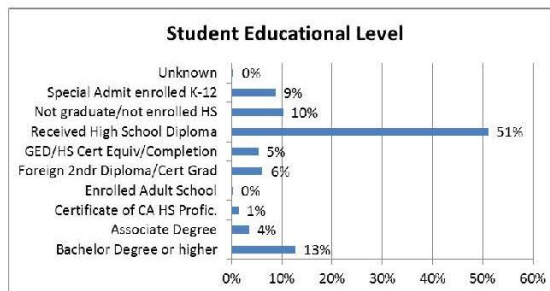
Most Cañada College students are Redwood City residents (32%), followed by San Mateo (9%), East Palo Alto (7%), San Carlos (6%), Menlo Park (5%), San Francisco (4%), Belmont (3%), and Half Moon Bay (3%).

The number of international students attending Cañada College on a Student Visa (I-20) is 101.

Note: data from SMCCD Data Dashboard

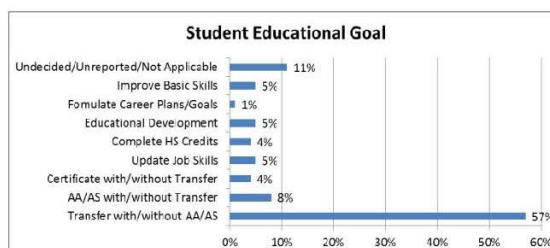
Educational Levels

Majority of our students are high school graduates (51%) and followed by students who had associate degree (4%) or bachelor degree or higher (13%). About 12% of our students have some kind of high school equivalent or certificate. About 10% of our students did not graduate from or enrolled in high school.



Educational Goal

Majority (69%) of students indicate that their educational goal is either to earn a degree, to transfer, or to earn a certificate. About 5% of students' educational goal is to update job skills, 5% for improving basic skills, and 11% undecided.



Degrees/Certificates Awarded and Transfer

Annual data will be available in spring.

- Describe any partnerships among colleges or with high school districts, workforce agencies, or other community partners that assist with providing core services to new students.

The San Mateo County Community College District (SMCCCD) is comprised of three colleges: Cañada, Skyline and the College of San Mateo. The three colleges coordinate policies and

Student Success and Support Program services through the Enrollment Services Committee (ESC). The ESC meets monthly and the committee is comprised of all the Vice Presidents of Student Services, Deans of Counseling and Enrollment Services, Registrars and Institutional Technology (IT) staff. The ESC directed the development of the SSSP MIS data reporting elements, updating the districts priority enrollment policy and the development of the SSSP Plans. The ESC will continue to serve as the main coordinating body for the implementation of the SSSP at the three colleges in the San Mateo Community College District.

B. Orientation

1. Were adjustments made to your orientation process based on outcomes from your 2014-15 program plan?

Ori-Reg Pipeline Project:

Starting in summer and fall of 2015, we began identifying the number of students who apply, attend orientation, complete assessment, attended a counseling sessions, and ultimately registered for classes. We will continue to track, monitor, and set goals to help students move along the matriculation pipeline. In collaboration with the Administrative Planning Council, these goals are reviewed, approved, and adopted into our Educational Master Plan.

More Orientations:

We improved Orientation attendance by providing a consistent weekly schedule adding Evening, Saturday, and Spanish Orientations to better serve working and Spanish Speaking students. We call each student one day before to confirm attendance and/or reschedule.

Ori Structure and Handbook:

We created a new hands-on training at the computer to teach students how to use college online resources vital to student success (Website, WebSMART, WebSCHEDULE, WebACCESS, MY.SMCCD.EDU). In addition, we created an improved version of the New Student Handbook with step-by-step instructions on using Online Resources, required to be able to register for classes and access information.

Increased Effort to Support Student Registration:

We added a part-time Office Assistant II and a full-time Retention Specialist to increase the follow-up in new student orientation attendance, and follow-up with students to complete class registration. The Retention Specialist was hired during the end of Fall 2014 and began efforts in increase registration for all incoming students. For Fall 2014 to Fall 2015, the efforts increased registration by 14.5%. The goal for Spring 2015 is to increase registration for Spring 2015 to Spring 2016 by 10%.

Orientation Evaluation:

The Welcome Center Service Area Outcome (SAO) in 2014 was to enhance student satisfaction of the Orientation, Assessment, and Registration program after attending the Orientation

sessions. The Student Learning Outcome (SLO) was to increase student knowledge of the information provided in orientation by 10% using a pre-post survey. Taking both the SAO and SLO, we developed and provided an evaluation for each student to complete at the end of each Orientation. In 2014, the satisfaction survey resulted in 685 student who completed the survey, 99% responded that they would recommend this orientation to a friend. In the pre and post section of the evaluation that assessed the Orientation attendees' knowledge in the following areas, resulted in increases in understanding (pre% to post%):

- Ability to use My.smccd.edu student communication email (69% to 99%)
- Ability to Register for Classes using WebSMART (71% to 98%)
- Ability to understand Math and English Assessment Test results and how they relate to their classes on the SEP and their educational goals base on the course sequence guide provide to each new student (65% to 98%)
- Ability to understand how placement test results relate to their SEP and Educational Goal/s (46% to 98%)

Priority Enrollment Program (PEP):

Each year in April & May, we partner with our local Sequoia High School District to provide targeted orientations to soon-to-be high school graduates. The Priority Enrollment Program (PEP) provides priority registration status to all the students who participate. The PEP involves group orientations outlining how to register, financial aid presentations, and a parent component and taking assessment tests in math, English, reading and/or ESL. This past spring, we added four special PEP session during the Sequoia High School Spring Break, serving ...(Maggie).

SparkPoint:

We have also added information regarding our SparkPoint Center whose goal is to serve individuals and families who are working to achieve financial self-sufficiency. Some of the SparkPoint features include Financial Literacy, Financial Coaching, Food Pantry, Assets Development Programs, and Access to Banking Services.

Title IX Information:

Additionally, in the Spring 2015. The SMCCD developed and implemented various activities and resources to address sexual misconduct, harassment, assault and Title IX mandates. *Not Anymore* is an interactive online program designed for community colleges students to prevent sexual assault, dating, and domestic violence, and stalking. The Bystander Intervention video is viewed at every new student's orientation and additional resources are shared form the Sexual misconduct, Harassment, Assault, and Title IX webpages.

2. a. How many students were provided orientation services in 2014-15?

In 2014, we served approximately 1,257 first-time students.

b. What percentage of the target population does this represent? – How many students enrolled? - emailed Edgar

c. What steps are you taking to reduce any unmet need or to ensure student participation?

Starting in spring 2015, we began to contact all newly enrolled, non-exempt students who have not have attended Orientation. We send them a follow-up email to remind them to sign up for our orientation. We have adopted this practice as part of the overall Ori-Reg Pipeline project.

Target Audience and Timing:

New Student Orientation is provided prior to the start of the summer/fall and spring semesters. The target audience is all of our first-time student applicants that have indicated that their educational goal is to earn a certificate, associate's degree and/or transfer to a 4-year university/college (non-exempt). We purposely target students to attend orientation at the very beginning of their academic pathway, before taking their assessment tests. The purpose of New Student Orientation is to connect our new students with the college staff, services, and resources that can support their academic success at Cañada College.

Delivery Methods:

The New Student Orientation sessions are provided to groups by our Welcome Center staff members using PowerPoint Presentation and the Student Online Services (WebSMART). In the calendar year 2014, we provided 65 in-person new student group orientations to approximately 1,257 students, serving up to 35 students in each session. We also provide online orientations to students who do not live near the College, and/or are taking online courses.

Partnerships:

Each year in April & May, we partner with our local Sequoia High School District to provide targeted orientations to soon-to-be high school graduates. The Priority Enrollment Program (PEP) provides priority registration status to all the students who participate. The PEP involves group orientations outlining how to register, financial aid presentations, and a parent component and taking assessment tests in math, English, reading and/or ESL. This past spring 2015 semester we served 207 PEP students.

3. a. Are orientation services offered online?

Yes, we provide online orientations to students who do not live near the College, and/or are taking online courses. Our online orientation is currently being revised. Currently we use Moodle for our online orientation. The San Mateo County Community College District has contracted with COMEVO to develop a new online version of our online orientation. COMEVO is an interactive 24/7 online orientation in which students will be able to demonstrate what they have learned through a quiz following each session. We have an internal team working on

revising the COMEVO orientation this year. We plan on the use of the new online orientation in the Spring 2016 to students who request it.

b. Identify any technology used to provide orientation, including any commercial or in-house products in use or under development, and annual subscription or staff support requirements.

The new student orientation is provided using PowerPoint presentations and our Student Online Services (WebSMART). We utilize the 'Not Anymore' for Community Colleges in accordance to Title IV. We are currently working with our other two campuses, College of San Mateo and Skyline College, to develop in in-house comprehensive district wide online orientation integrated with COMEVO.

4. Identify the topics covered in orientation. Include those topics mandated by title 5 section 55521 and any additional information, policies and/or procedures that the college or district determines necessary to include in a comprehensive orientation.

Orientation Checklist (Required Policy or Procedure)

- (1) Academic expectations and progress and probation standards pursuant to section 55031;
- (2) Maintaining registration priority pursuant to section 58108;
- (3) Prerequisite or co-requisite challenge process pursuant to section 55003;
- (4) Maintaining Board of Governors Fee Waiver eligibility pursuant to section 58621
- (5) Description of available programs, support services, financial aid assistance, and campus facilities, and how they can be accessed;
- (6) Academic calendar and important timelines.
- (7) Registration and college fees.
- (8) Available education planning services

Cañada College has a long history of mandating new student orientation, assessment and counseling services as part of the matriculation process for all non-exempt applicants. The process is evaluated extensively each year through program review and changes are made to improve this service. Each year a New Student Handbook is developed and distributed at all of our New Student Orientations. The handbook contains important information, to include the following:

1. College Directory
2. Description of student support services and how to locate the offices on campus
3. Information on our Student Online Services (WEBSMART)
4. Directions on how to register and access the student email account
5. Information on WebAccess (course management portal) WebSchedule (online course schedule) and DegreeWorks (online educational plan and degree audit system)
6. Summary of the Student Grievance & Disciplinary Process and the Student Code of Conduct
7. An Academic Planner

In each orientation session, the contents of the handbook are reviewed so that students are aware of important information about the college and additional information is discussed through Power Point presentations including the following:

1. Review of the college catalog, class schedule, academic calendar and fee schedule (including information on the BOGFW and Financial Aid)
2. Information on how to prepare for the assessment tests and the prerequisite or co-requisite challenge process
3. Information on how to maintain priority enrollment status, which includes a discussion on academic and progress probation standards and educational planning

At the end of each Orientation students complete a New Student Orientation Satisfaction Survey. In 2014, of the 685 student who completed the survey, 99% responded that they would recommend this orientation to a friend.

Following every orientation and assessment session, each student receives a 30 minute appointment with a counselor within a 48 hour period. The counselor discusses with students the assessment results and their educational goal(s), develops a preliminary educational plan, and assists the student in developing a first semester course schedule.

In Spring 2012, the SMCCCD implemented the Plan Ahead/Pay Ahead program which requires all students to pay all their fees prior to each semester or they will be dropped from their classes. Students who have applied for the FAFSA, or have been awarded a BOGFW, or have enrolled in a payment plan are not dropped for non-payment. This information is covered in every orientation session as students need to be aware of the payment requirements.

Extended Orientations:

In addition to our New Student Orientation, EOPS/Care and CalWorks students participate in a required extended orientation provided by program staff. Students are given more in-depth information regarding campus policies and procedures, registration, academic and student support available on campus, and degree and certificate program information. Students are given a college catalog and are given a post test of what they have learned. Students are then given a counselor appointment to complete a comprehensive SEP. We offered 23 EOPS/Care and CalWorks orientations and served 220 students in those orientations.

We also offer an extended orientation to our incoming high school students from our local Sequoia High School District. Community of Leadership and Transfer Success (COLTS) Academy is a 4-day program for first-year incoming students that provides the opportunity to meet students, faculty, and staff, learn about leadership opportunities on campus, and walk away with a Transfer Success Portfolio equipped with tools and resources for college success. The Academy features fun and interactive workshops on student success, career exploration, and educational planning. It also features a powerful mix of peer leaders who mentor participants, providing an overall head start on their academic career. We had a total of 37 incoming high school students attend summer of 2015.

5. Complete the chart below outlining the staff associated with orientation and the source used to fund the position. These staff listed below should match those in your budget plan. Additional lines may be added.

# of FTE	Title	Role	Funding Source (SSSP/Match/GF)
1.0	Dean, Counseling	Oversee the New Student Orientation Program	GF (83% Match)
1.0	Program Services Coordinator	Manages the day-to-day scheduling and conducts the orientations	SSP 90%, GF 10% (GF 100% match)
2.0	Office Assistant II	Assists in scheduling and conducting the orientation sessions	SSSP 50%, FG 40%, 10% International (GF 100% match)
1.0	Retention Specialist	Assists In follow-up with students who have attended assessment and have not yet registered	SSSP 100%

6. Complete the chart below outlining all other orientation related expenditures, including the direct cost to purchase, develop or maintain technology tools specifically for orientation services. These expenditures should correspond to those in your budget plan. Additional lines may be added.

Budget Code	Expenditure Title/Description	Funding Source (SSSP/Match/GF)	Amount
4510	Supplies/Print Paper, Misc.	SSSP	\$3000
5690	Promotional Pens, Student Planners	SSSP	\$1700
4580	Central Duplicating	SSSP	\$1100

C. Assessment for Placement

1. Were adjustments made to your assessment for placement process and/or procedures based on outcomes from your 2014-15 plan?

One major adjustment made to our assessment for placement process and procedures was adding a Multiple Measures Pilot Program. Our campus was selected to participate in an assessment pilot program through the Multiple Measure Assessment Project (MMAP) collaborative led by Educational Results Partnerships' system Cal-Pass and the RP Groups, with the support from the California Community College Chancellor's office. This project allows for incoming high school students to submit high school transcripts, testing data, and/or other non-cognitive variables for placement into English and/or Math. The pilot program will work to develop internal capacity and support necessary to locally implement more robust multiple measures in assessment and placement. We anticipated serving approximately 50 students this academic year, however we have served over 200 multiple measures applications. We will track this first cohort's outcomes to measure effectiveness.

2. a. How many students were provided assessment services in 2014-15?

In 2014, we assessed 2,439 students. Approximately 1033 were first-time students and 1,400 were continuing students.

b. What percentage of the target population does this represent? (Edgar)

c. What steps are you taking to reduce any unmet need or to ensure student participation?

Increased Effort to Support Student Registration:

The increased effort to support student registration mentioned in the Orientation section also supports reducing any unmet need in Assessment. We added a part-time Office Assistant II and a full-time Retention Specialist to increase the follow-up in new student orientation attendance, and follow-up with students to complete class registration. The Retention Specialist was hired during the end of Fall 2014 and began efforts to increase registration for all incoming students. For Fall 2014 to Fall 2015, the efforts increased registration by 14.5%. The goal for Spring 2015 is to increase registration for Spring 2015 to Spring 2016 by 10%.

3. Give a brief and specific overview of the assessment process. Include a description of the test preparation that is available.

Target Audience:

Assessment and Placement services are provided prior to the start of the summer/fall and spring semesters. The target audience is all of our new student applicants that have indicated that their educational goal is to earn a certificate, associate's degree and/or transfer to a 4-year university/college (non-exempt), as well as, returning and continuing students.

Assessment Process:

We designed our New Student Orientation and Assessment process to occur together. First, students participate in New Student Orientation and then they take the COMPASS assessment tests in math, English, reading and/or ESL. The purpose of New Student Assessment is to determine a student's current skill in mathematics, reading, English/English as a Second Language (ESL).

Assessment services are provided four days a week throughout the year for our continuing or returning students. New students are mandated to attend a joint orientation and assessment session which are held up to three times a week during the registration periods. Students have the option of attending a day, evening, weekend or Spanish only orientation and assessment session. Our assessment center can serve up to 50 students at a time.

Partnerships:

Once the COMPASS assessment tests can be completed online, we plan to offer assessment testing services at our local high schools. The initial assessment test is provided while students are still in high school (in April/May of their senior year) or during the registration period prior to the beginning of each semester.

In addition, we are conducting research to use High School transcripts for placement. We are working closely with our primary feeder high school district to develop this process.

Pre-test practice:

Students are informed at the point that they sign-up for an orientation session of the pre-test practice information available on our Assessment website. All students are encouraged to review the test-prep information prior to attending an orientation and assessment session.

Math and Word Jam:

Additionally, during orientation students are informed of our intersession Math Jams and Word Jams. Math/Word Jams offer students the opportunity to improve their placement test results. Each Jam is held a week prior to the beginning of the summer, fall and spring semesters and provides students with an intensive review of math and English. The students re-take the COMPASS assessment test after completing each Jam.

4. **a. Identify any assessment test(s) used for placement into English, mathematics, and ESL courses. Provide specific information about any second-party tests, including the versions and forms used.**

Test:

The ACT Compass Internet System 5.0 test(s) are used for placement into English, mathematics, and ESL courses. English skills are assessed through reading, writing and grammar component and the ESL test also includes a listening portion. The mathematics test includes assessment of numerical skills, college algebra, geometry, and trigonometry components.

Currently our computerized assessments in English, ESL and mathematics are administered individually or in group settings. Placement results are given to each student immediately following their completion of the test(s).

AP/EAP:

Students are exempt for taking the assessment test if they can show evidence of completing the College Board Advanced Placement (AP) Test in English Language or English Literature with a score of 3, 4, or 5 or if they are a high school senior planning to attend summer or fall classes and have completed the Early Assessment Program (EAP) test at their high school. The EAP test results must place the student in “college ready” English or math

b. When were tests approved by the CCCCO and what type of approval was granted? – (Chialin)

c. When were disproportionate impact and consequential validity studies last completed?

In May 2014, Canada College's Office of Planning, Research and Institutional Effectiveness (PRIE) conducted a validity study viewing student and faculty perceptions regarding the appropriateness of student placement in English, Math, Reading, and ESL courses. The brief describes the results of the qualitative portion of this analysis in which faculty and students were surveyed in order to determine their perceptions of the appropriateness of the students' placement. We have not done a disproportionate impact study on assessment tests however this is something we can explore through Student Equity committee.

(Should I attach study to report?)

Again, through the Student Equity Committee, we will look at conducting a disproportionate impact study with the Multiple Measures Pilot Program (MMPP) data as well, with particular focus on gender and ethnic groups.

5. a. What multiple measures are used?

Multiple Measures:

Other measures used for placement may consist of (if applicable) having students:

- Provide their high school transcripts, AP and EAP scores when meeting with a counselor
- Provide their assessments, prior coursework and transcripts from other colleges/institutions for review by a counselor

b. How they are integrated into the assessment system (as part of an algorithm included in the test scoring process, applied by counselors, etc.)?

Counselors engage in conversations with students regarding their academic preparation in English, reading and math as another tool to assist in the placement process.

c. Do these measures meet the multiple measures requirement per title 5, sections 55502 and 55522?

6. Describe the policy on the acceptance of student assessment scores and placement results from colleges within a multi-college district, from colleges outside of the district, or from adult education programs.

The SMCCCD's policy states that a student is exempt for taking our assessment test if they have taken an assessment test at two other sister colleges in the district – Skyline College or the College of San Mateo. In addition, if a student has completed the COMPASS or Accuplacer assessment test at another college in California, and can provide us with the scores, we are able to use these assessment scores for course placement.

7. How are the policies and practices on re-takes and recency made available to students?

Re-take:

Students may retake the assessment test one time within a two-year period unless they are advised to re-take the test from a counselor or complete either Math Jam and/or Word Jam. Our college re-test policy is printed in the class schedule each semester.

Recency:

Math tests are valid for two years from the test date. English, ESL and reading tests do not have a recency limit. The recency requirement for math is printed in the class schedule each semester.

8. Complete the chart below outlining the staff associated with assessment for placement and the source used to fund the position. These staff listed below should match those in your budget plan. Additional lines may be added.

# of FTE	Title	Role	Funding Source (SSSP/Match/GF)
1.0	Dean, Counseling	Oversee the New Student Orientation Program	GF (83% Match)
1.0	Program Services Coordinator	Manages the day-to-day scheduling and conducts the orientations	SSP 90%, GF 10% (GF 100% match)
2.0	Office Assistant II	Assists in scheduling and conducting the orientation sessions	SSSP 50%, FG 40%, 10% International (GF 100% match)
1.0	Retention Specialist	Assists In follow-up with students who have attended assessment and have not yet registered	SSSP 100%

9. Complete the chart below outlining all other assessment for placement related expenditures, including the direct cost to purchase, develop or maintain technology tools specifically for assessment for placement services. These expenditures should correspond to those in your budget plan. Additional lines may be added.

Budget Code	Expenditure Title/Description	Funding Source (SSSP/Match/GF)	Amount
4510	Supplies	SSSP	\$700
5211	Conferences	SSSP	\$300
5212	Out-of-State Conferences	Match	\$2000

D. Counseling, Advising, and Other Education Planning Services

1. Were adjustments made to your counseling services process and/or procedures based on outcomes from your 2014-15 plan?

Counseling:

We added a full-time counselor to provided dedicated counseling services to our College for Working Adults (CWA) program. CWA works with working adults who which to pursue their degree and transfer.

Transfer Counselor

With the increase in students who indicate Transfer as a goal, we added a full-time Transfer Counselor to help support students reach their transfer goals.

DRC/LD

Through our program review process, it became evident that our campus was lacking adequate services in the area of learning disabilities testing and evaluation. Adding a full-time Disability Resources Center/Learning Disability Specialist will provide direct services to students who may need assessment and evaluation.

Degree Audit

Prior to SSSP support, the three colleges shared one degree auditor for our Transcript Evaluation Service (TES). With the collaborative agreement with the two other colleges in our district, we can add three additional degree auditors. The impact of expanding this services is that the timeline for transcript evaluation will go from a six month wait period to six weeks. Students will be able to submit their transcripts from other colleges and request an evaluation, and receive a response in a shorter period of time. This can impact student education planning and/or degree completion.

2. a. How many students were provided counseling, advising and education planning services in 2014-15?

Maggie or Edgar – emailed

b. What percentage of the target population does this represent?

c. What steps are you taking to reduce any unmet need or to ensure student participation?

Increased Effort to Support Student Registration:

We added a full-time Retention Specialist to increase the follow-up in new student orientation attendance, and follow-up with students to meet with a counselor and complete class registration. The Retention Specialist was hired during the end of Fall 2014 and began efforts in

increase registration for all incoming students. For Fall 2014 to Fall 2015, the efforts increased registration by 14.5%. The goal for Spring 2015 is to increase registration for Spring 2015 to Spring 2016 by 10%.

SEP Priority Registration

3. a. Describe the service delivery methods (in person, workshops, FTES generating course, etc.).

Target Audience:

All Cañada College students are provided with the opportunity to receive counseling, advising and other educational planning services. In the 2014 calendar year, approximately 27,000 student visits (duplicated) were made to counseling and/or advising services. Specifically, we target our counseling, advising and educational planning services to students who have declared an educational goal of earning a certificate, an Associate's Degree (including ADT) and/or transferring to a four-year institution.

Appointments:

Counseling services are provided primarily through 30 minute individual in-person appointments, which are provided throughout the year. Students can schedule counseling appointments through the Welcome Center staff (either by phone or in person). The Welcome Center is open Monday & Thursdays from 8:00am-4:30pm, Tuesdays and Wednesdays from 8:00am-7:00pm and Fridays from 8:00am to 12:00pm. During the peak registration period (November & April) students are able to schedule a 30 minute appointment to meet with a counselor within 5 days. Outside of these timeframes, students can see a counselor within a 24 hour period.

Online:

E-counseling is available to all students on a limited basis every fall and spring semester. Students also have access to counselors via email throughout the year.

Delivery Method:

For our new students who are required to meet with a counselor prior to registration, a 30 minute individual appointment is provided. At the end of this appointment, these new students have an abbreviated student educational plan (SEP) which is entered into Degree Works and a follow-up appointment is made to complete a comprehensive educational plan. In addition, students have opportunities to access these services through drop-ins, workshops, an in-person, phone, email and/or online counseling appointments. In the upcoming year (2014/15), we are also including advising services provided by the Science, Technology, Engineering and Math (STEM) Center, and the English as a Second Language (ESL) and Community Based English Tutoring (CBET) programs. EOPS/CARE students are required to meet with an EOPS counselor at least three times in a semester. CalWORKs students are mandated to have at least one counseling contact per semester.

Tracking Services:

The San Mateo County Community College District uses SARS GRID to track all student contacts (drop-ins, appointments and workshops). The counselors throughout the District have access to view all counselor notes from our sister colleges (Skyline and the College of San Mateo), since many of our students also enroll in courses at two or three of the colleges simultaneously. SARS has the Alert function that allows for tracking at-risk students.

Points in the Academic Pathway:

Prior to registration, all non-exempt students are encouraged to meet with a counselor prior to their initial registration and in order to receive priority registration a continuing student must have an updated educational plan.

Services Provided:

There are a variety of programs providing counseling and advising services, as well as workshops, these include the following: General Counseling/Advising (on and off campus locations), Associates to Bachelor's Degree (A2B), Beating the Odds (BTO) peer mentoring program, Cooperative Agencies Resources for Education (CARE), California Work Opportunity and Responsibility for Kids (CalWORKs), Career Center, Career and Technical Education Transitions (CTE), Community Based English Tutoring (CBET), Disability Resource Center (DRC), Educational Opportunity Program and Services (EOPS), Foster Youth, English as a Second Language (ESL), Financial Aid counseling for students at-risk of losing their financial aid, International Student Center (ISC), Student Support Services (TRIO), Transfer Center and the Science Technology, Engineering and Math (STEM), Expanding Student Opportunities (ESO).

Career and Personal Development Courses:

The Counseling Department also offers several Career courses that are transferable to a four year universities: Life and Career Planning (CRER 137), Introduction to Scholarships (CRER 300), College Success (CRER 401), Exploring Careers, Majors, and Transfer (CRER 407), Career Assessment (CRER 430), and Honors Colloquium in Career and Personal Development: Transfer Essentials and Planning (CRER 110).

EOPS Continuing Student Orientations:

EOPS Counseling Faculty and Staff provide orientations for continuing EOPS students. They reviews EOPS program guidelines and policies; assists students with feedback on how to get back into good standing and become eligible for all services; and provide EOPS program updates. In addition, we promote SparkPoint services. We served 91 students in these continuing student orientations in 2014-15.

Workshops:

Transfer Center

Career Center

STOP

Other workshops

b. Is drop-in counseling available or are appointments required?

Drop-In:

Drop-in counseling is made available a week before the start and during the first two weeks of the summer/fall and spring semester. During the first two days of each semester the average drop-in wait time is 45 minutes.

c. What is the average wait time for an appointment and drop-in counseling?

If a student has an appointment, there is very little to no wait time. During the first two days of each semester the average drop-in wait time is 45 minutes.

4. a. Describe the type of assistance provided to students to develop an abbreviated student education plan and the scope and content of the plan.

Abbreviated Plan Development:

All non-exempt new students are required to attend an orientation and assessment session and meet with a counselor to develop an abbreviated student education plan prior to registering for classes. In the summer of 2012, significant changes were made in the structure of the new student success services to allow each new student a 30 minutes counseling appointment to ensure that an initial educational plan could be developed prior to enrollment in college for the first time.

Student Learning Outcome:

All students are required to complete a student learning outcome survey before orientation and after their counseling appointment so that we can measure if they learned the most important aspects taught at the orientation, assessment, and counseling sessions. The 2013-14 post-survey results measured a 55% increase in students' ability to know what classes he/she needs to take to meet their academic, career and personal goal.

Scope and Content:

An abbreviated education plan is one or two terms in length and is typically used for entering first time students, students on academic or progress probation, or students who have short term educational goals.

b. Describe the type of assistance provided to students to develop a comprehensive education plan and the scope and content of the plan.

Comprehensive SEP Assistance:

The comprehensive SEP is developed during a 30 minute counseling appointment, generally during a new student's first semester. A comprehensive education plan is at least 2 terms in length and reflects the number of units and terms required to achieve the student's declared course of study.

Promotion of the SEP:

The Counseling Department's Service Area Outcome (SAO) in 2011-14 is to increase the number of students who visit the counseling center to create a comprehensive Student Educational Plan (SEP) each semester. The "Got Priority" SEP campaign was launched in the spring of 2011 in order to increase the number of students with a comprehensive SEP on DegreeWorks. As a result of implementing this campaign, approximately 200 students met with a counselor and developed a comprehensive SEP in March/April, 2011. Since the spring of 2011, the department has institutionalized the SEP campaign each semester.

Numbers Served:

DegreeWorks is a web-based degree audit tool that assists students and counselors monitor progress toward degree, certificate and transfer completion. Data from Spring 2015 shows that of 3,651 students enrolled at Cañada with 6 units or more, 2,375 have an SEP for the term. That amounts to about 65% of our students have an SEP.

5. Identify any technology tools used for, or in support of, counseling, advising and other education planning services, such as an education planning tool or degree audit system.

Online Orientation:

Distance education students are referred to an online orientation and advisement module (developed by COMEVO).

Degree Audit:

DegreeWorks is a web-based degree audit tool that assists students and counselors monitor progress toward degree, certificate and transfer completion. Once a student has met with their counselor and developed a first semester educational plan they are eligible to register for their classes using WebSMART. WebSMART is an online student portal (that interfaces with Banner) that allows students to register, order textbooks, access DegreeWorks, request transcripts, pay fees and update their personal information and educational goal.

Service Tracking:

The San Mateo County Community College District (SMCCCD) uses the Schedule And Reporting System (SARS) GRID to schedule appointments, track the content and length of each student appointment, remind students of their counseling appointments via phone calls and emails and provide queries on how many and how students are served each day. Counselors and advisors use SARS on a daily basis as an electronic student file that can be shared with counselors throughout the district. SARS Alerts are used to track students who are on probation and/or dismissal status.

Transcript Evaluation Service

6. Complete the chart below outlining the staff associated with counseling, advising and education planning services and the source used to fund the position. These staff listed below should match those in your budget plan. Additional lines may be added.

# of FTE	Title	Role	Funding Source (SSSP/Match/GF)
1	Dean, Counseling Services	Oversees the Counseling Department	GF 70% (GF 17% Match), International Students 30%
1	Division Assistant	Provides assistance to the Dean in managing the day-to-day operations of the Counseling Department	SSSP 30%, GF 70% (GF 20% Match)
1	Retention Specialist	Provides assistance to the Dean in following up with at risk students	SSSP 100%
1	Office Assistant-EOPS/CARE/CalWORKs /Sparkpoint	Provides clerical support for the EOPS/CARE & CalWORKs programs	EOPS 60%,CARE 5%, TANF 15%, WFSN 20%
1	Program Services Coordinator	Coordinates the day-to-day activities of the EOPS/CARE programs and provides follow-up support to students in the CalWORKs program	EOPS 80%,CARE 5%, CalWORKs 15%
1	Program Services Coordinator	Manages the Welcome Center and day-to-day scheduling of counseling appointments and directing students to campus services	SSSP 90%, GF 10% (GF 100% Match)
1	Office Assistant-Welcome Center	Assists in scheduling counselor appointments and directing students to campus services	SSSP 100%
1	Office Assistant-Welcome & Transfer Center	Assists in scheduling counseling appointments and directing students to campus services. Provides support to the Transfer Center	GF 90% (GF 100% Match), International Students 10%
1	Program Supervisor	Serves as the Program Supervisor for the Career Center	GF 100% (GF 100% Match)
.50	Part-time Career Resources Aide	Serves as the part-time aide in the Career Center	GF 100% (GF 100% Match)
1	Program Supervisor	Serves as the Program Supervisor for the Transfer Center	GF 100% (GF 100% Match)
1	General Counselor(1 FTE)	Provides general counseling and serves as the e -counselor and career counselor	GF 100% (GF 100% Match)

1	General Counselor (1 FTE)	Provides general counseling and teaches CRER courses and services as counselor and coordinator for the Puente Program	GF 100% (GF 100% Match)
1	Transfer/Honors Counselor (1FTE)	Provides Transfer Services counseling for the Transfer Center and serves as the Honors Transfer counselor	GF 100% (GF 100% Match)
1	General Counselor (1 FTE)	Provides general counseling and teaches CRER courses and serves as the Veterans and Athletics counselor	GF 100% (GF 100% Match)
1	General Counselor (1 FTE)	Provides general counseling and teaches CRER courses and serves as the Early Alert and Probation/Dismissed/Reinstatement counselor	GF 50% (GF 100% Match), 50% SSSP
1	CWA and CAA Counselor (1 FTE)	Serves as counselor for the College for Working Adults and the Career Advancement Academy -MEDA program	SSSP 100%
1	Disability Resources Center Counselors (1 FTE)	Provides specialized counseling and services for students with disabilities	GF 30%, SSSP 50%, DRC 20%
1	EOPS/CARE Coordinator & Counselor (1 FTE)	Serves as the counselor and coordinator for the EOPS/CARE programs	GF 50%, 50% CalWORKs
1	EOPS/Cal WORKs Counselor & Cal WORKs Coordinator (1 FTE)	Serves as a counselor for the EOPS & Cal WORKs programs and as the coordinator for the Cal WORKs program	CalWorks 25%, EOPS 60%, CARE 15%
1	Basic Skills Coordinator & Counselor (1 FTE)	Serves as the counselor and coordinator for the Basic Skills program	Basic Skills 80%,SSSP 20%
1	TRiO Coordinator and Counselor (1FTE)	Serves as the counselor and coordinator for the federally funded TRiO student support services program	Trio 100%
.206	Part-time counselor	Serves as a part-time general counselor	SSSP 100%
.38	Part-time counselor	Serves as a part-time general counselor	SSSP 100%
.148	Part-time counselor	Serves as a part-time counselor for the Associates to Bachelor degree (A2B) program	A2B 100%
.240	Part-time counselor	Serves as a part-time counselor for the EOPS program	SSSP 100%
.059	Part-time counselor	Serves as a part-time general and DRC program	SSSP 100%
.54	Part-time counselor	Serves as a part-time counselor for the STEM program	SSSP 100%
.254	Part-time counselor	Serves as the part-time counselor for Human Services, Transfer and the Menlo Park Center	SSSP 100%
.47	Part-time counselor	Serves as a part-time counselor for the A2B, BTO and TRiO programs	A2B (36%), TRIO (28%),SSSP (36%)

1.32	Program Services Coordinators Degree Auditors	Provides transcript evaluation for students with coursework outside of SMCCD	SSSP 100%
.33	OA II – Degree Audit Program	Provides office support in the Degree Audit Program office	SSSP 100%

All full-time counselors work 30 hours per week during the academic calendar of which 25 hours each week are student contact hours.

7. **Complete the chart below outlining all other counseling, advising and education planning related expenditures, including the direct cost to purchase, develop or maintain technology tools specifically for these services. These expenditures should correspond to those in your budget plan. Additional lines may be added.**

Budget Code	Expenditure Title/Description	Funding Source (SSSP/Match/GF)	Amount
4510	Supplies, Handbooks, Student Planners	SSSP (\$11,000)/Match (\$2,000)	\$13,000
4580	Central Duplicating	SSSP	\$6,700
5211	Conferences	SSSP (\$4,000)/Match (\$1,200)	\$5200
4510			

E. Follow-Up for At-Risk Students

1. **Were adjustments made to your follow-up services and/or procedures based on outcomes from your 2014-15 plan?**

Retention Specialist – Add description from Maggie

CARES Program

2. **a. How many students were provided follow-up services in 2014-15?**

b. What percentage of the target population does this represent?

c. What steps are you taking to reduce any unmet need or to ensure student participation?

Target Audience:

The target student audience that is provided follow-up for at-risk students are those students who are either on probation 1 (one semester on academic or progress probation), probation 2 (two semesters on academic or progress probation), dismissed (three semester on academic or progress probation) or have been granted reinstatement status after being dismissed. At the end of each semester students are contacted via email to notify them of academic/progress

status and encouraged to see a counselor if they are on probation 1 or 2 and required to see a counselor if they have been dismissed.

Services:

All students who have been determined to be at-risk are contacted by counseling services. Students who have been dismissed are required to meet with a counselor and complete a student success contract which requires regular contact and a mid-semester progress report as a condition of continued enrollment.

Basic Skills Students (estimate #)

All students who are enrolled in a basic skills course are provided with counseling and advising support by the Basic Skills Counselor and Retention Specialist. Support Services include the following:

1.

Students who have not identified an ed. goal (estimated #)

Students on academic or progress probation (estimated #)

3. a. What types of follow-up services are available to at-risk students?

Strategies:

Students are required to meet with one of two Early Alert counselors to assist them in achieving academic stability. Both counselors work one-on-one with each student to identify the issues that contributed to their academic status and then assist them in identifying strategies to overcome each issue. The students are accountable to their counselor throughout the semester and must provide their counselor with a mid-semester progress report.

Service Delivery:

All services for at-risk students are in person and one-on-one.

b. How and when are students notified of these services?

Follow-up Services:

The Early Alert system interfaces with the online student portal (WebSMART). Students receive a email directly from their instructors indicating that they have been issued an alert regarding their academic progress (quality of work, attendance, and/or homework). Students also receive an email and a phone call from one of two Early Alert counselors.

c. Describe the service delivery method (in groups, workshops, etc.) and any technology tools used.

Student Success Workshops – get info from Maggie

d. Are instructional faculty involved in monitoring student progress? Do they participate in early alert systems?

Early Alert:

The Early Alert counselors work closely with instructional faculty to identify and communicate with students who are showing signs early on that they are not on track to successfully complete the course. Both the faculty and the counselor reach out to the students via email and phone calls. Each academic year approximately 200 contacts are made via the Early Alert system and 100 reinstatement contracts are developed for students who have been dismissed. Additionally, each semester follow-up is provided to Probation 1, Probation 2 and dismissed students.

4. Complete the chart below outlining the staff providing **follow-up services** and the source used to fund the position. These staff listed below should match those in your budget plan. Additional lines may be added.

The following staff provide follow-up services for all at-risk students:

# of FTE	Title	Role	Funding Source (SSSP/Match/GF)
1	Division Assistant	Provides clerical support in contacting students who are on Probation 1, Probation 2 and Dismissed students each semester.	
1	Retention Specialist	Provides support to counselors in following up with students on Probation 1, Probation 2 and Dismissed students each semester	
1	Retention Specialist	Provides support to counselors in following up with students in one level below transfer level English.	
1	General Counselor (1 FTE)	Provides general counseling and serves as the Early Alert and Probation/Dismissed/Reinstatement counselor	
1	Basic Skills Coordinator & Counselor (1 FTE)	Serves as the counselor and coordinator for the Basic Skills program. Serves as the Early Alert and Probation/Dismissed/Reinstatement counselor for students enrolled in basic skills courses	
1	General Counselor(1 FTE)	Provides general counseling and serves as the e - counselor and career counselor	
1	General Counselor (1 FTE)	Provides general counseling and serves as the e - counselor and career counselor	
1	General Counselor (1 FTE)	Provides general counseling and teaches CRER courses and services as counselor	

		and coordinator for the Puente Program	
1	Transfer/Honors Counselor (1FTE)	Provides Transfer Services counseling for the Transfer Center and serves as the Honors Transfer counselor	
1	General Counselor (1 FTE)	Provides general counseling and teaches CRER courses and serves as the Veterans and Athletics counselor	
1	EOPS/CARE Coordinator & Counselor (1 FTE)	Serves as the counselor and coordinator for the EOPS/CARE programs	
1	Disability Resources Center Counselors (1 FTE)	Provides specialized counseling and services for students with disabilities	
1	CWA and CAA Counselor (1 FTE)	Serves as counselor for the College for Working Adults and the Career Advancement Academy -MEDA program	
.240	Part-time counselor	Serves as a part-time counselor for the Associates to Bachelor degree program(A2B)	
1	EOPS/Cal WORKs Counselor & Cal WORKs Coordinator (1 FTE)	Serves as a counselor for the EOPS & Cal WORKs programs and as the coordinator for the Cal WORKs program	
1	TRiO Coordinator and Counselor (1FTE)	Serves as the counselor and coordinator for the federally funded TRiO student support services program	
.412	Part-time counselor	Serves as a part-time general counselor	
.303	Part-time counselor	Serves as a part-time general counselor	
.240	Part-time counselor	Serves as a part-time counselor for the EOPS program	
.240	Part-time counselor	Serves as a part-time counselor for general students and athletes	
.488	Part-time counselor	Serves as a part-time counselor for the STEM	
.333	Part-time counselor	Serves as a part-time counselor for General, Human Services, Transfer, and for the Menlo Park Center	
.47	Part-time counselor	Serves as the part-time counselor for A2B/BTO and TRiO	

5. **Complete the chart below outlining all other follow-up services related expenditures, including the direct cost to purchase, develop or maintain technology tools specifically for these services. These expenditures should correspond to those included in your budget plan. Additional lines may be added.**

Budget Code	Expenditure Title/Description	Funding Source (SSSP/Match/GF)	Amount
-------------	-------------------------------	--------------------------------	--------

F. Other SSSP/Match Expenditures

1. Describe any institutional research directly related to the provision and/or evaluation of SSSP services. List any related expenditures in the table below. These expenditures should correspond to those in your budget plan.

Budget Code	Expenditure Title/Description	Funding Source (SSSP/Match/GF)	Amount

2. List any match expenditures not previously accounted for in the plan. These expenditures may include Admissions and Records, Transfer and Articulation Services, Career Services, Institutional Research (unrelated to SSSP), instructionally funded tutoring and supplemental instruction costs for at-risk students. These expenditures should correspond to those in your budget plan.

Budget Code	Expenditure Title/Description	Funding Source	Amount

SECTION III. POLICIES

A. Exemption Policy

1. Provide a description of the college or district's adopted criteria and process for exempting students from SSSP-required services in accordance with title 5 section 55532.

Students are exempt from participating in the Student Success Process if on their college application they indicate one of the following:

- Have completed an Associate or higher degree
- Have enrolled in classes for personal enrichment only and do not intend to earn a degree or certificate, or
- Are primarily a student at another educational institution and taking courses at Cañada College to meet requirements of that institution

2. What percentage of your student population is exempt (list by category)?

Edgar – emailed request

B. Appeal Policies

Describe the college's student appeal policies and procedures. If these policies are posted on the college's website, also provide the link below.

New students may petition to be exempt from participating in orientation, assessment and/or counseling. A student must submit a Petition for Exemption Form to the Office of Admissions & Records that includes the following documentation/information:

Orientation:

- Evidence of having completed 12 or more college applicable units at another accredited college or university in the United States and know the Cañada College system and procedures (Attach a copy of official or unofficial transcripts).
- Assessment:
- Evidence of completing the placement tests in English, ESL, or math in the SMCCD within the last two years and test results are available for review.
- Evidence of completed coursework in English and/or math with a grade of "C" or better at an accredited college or university in the United States (Attach a copy of official or unofficial transcripts).
- Evidence of Advanced Placement (AP) scores of 3, 4, or 5 in English and/or math (Attach a copy of the test scores).
- EAP test results placing students in transferrable English and/or math.
- Evidence of having completed 12 or more college applicable units at another accredited college or university in the United States and know the specific coursework you must complete to achieve your educational goals (Attach a copy of official or unofficial transcripts).

All students must sign the petition and have a counselor sign the petition (if needed).

C. Prerequisite and Corequisites Procedures

Provide a description of the college's procedures for establishing and reviewing prerequisites and corequisites in accordance with title 5 section 55003 and procedures for considering

student challenges. If these policies are posted on the college's website, also provide the link below.

The Academic Senate of Cañada College requires a routine review and updating of Course Outlines of Record for CTE courses every two years and for all other courses at least once every five years. During the routine review of the required and recommended preparation, a department should:

- Determine whether prerequisites, corequisites, and/or courses have changed
- Check to see if the content of any preparatory courses have changed
- Add or delete prerequisite, corequisite, and/or advisory courses, as necessary
- Make any other revisions in the course, such as changes to current textbooks
- Submit the revised Course Outline of Record for approval Procedures for Challenging Prerequisites and Corequisites:

Students who wish to challenge a prerequisite or corequisite course must complete a "Petition to Challenge a Prerequisite" form. To file a petition, the completed Petition, a letter justifying the challenge, and all documentation (transcripts, samples of work, letters) must be submitted to the Counseling or Admissions & Records Office. Students will be notified of the results of the petition within 5 working days. If denied, an appeal to the decision may be made through the Office of the Vice President of Student Services.

A petition to challenge a prerequisite or corequisite must be submitted prior to the first day of the term, and must be based on one of the following grounds.

1. The prerequisite or corequisite is not established in accordance with district policies or Title 5 regulations.
2. The student has the knowledge and ability to succeed in the course despite not meeting the course prerequisite.
3. The student is subject to the undue delay in goal attainment because the prerequisite or corequisite has not been made reasonable available.
4. The prerequisite or corequisite is unlawfully discriminatory or applied in an unlawfully discriminatory manner.

Prerequisite Challenge Petition forms are available on the Cañada College website and in the Counseling Department and Office of Admissions and Records.

SECTION IV. PROFESSIONAL DEVELOPMENT

Describe plans for faculty and staff professional development related to implementation of SSSP.

The following is the 2015-16 plan for professional development for each area related to the Student Success and Support Program:

Orientation: The Welcome Center staff will provide faculty and staff trainings each semester to share the content of a new student orientation and seek feedback for improvement.

Assessment: The college has hosted several regional meetings regarding the use of multiple measures (high school transcripts) in the placement of students. We will continue to work closely with our local high school district and CalPASS to review and update the rubric for placing recent high school graduates into math, reading and English courses. Training will be provided to all counselors and Welcome Center staff with any updates to the rubric and placement procedures.

Counseling: Continued trainings in using the Get Focused/Stay Focused – My10yearPlan curriculum in our CRER courses will be available throughout the 2015-16 year to all counselors teaching a CRER course. Bi-weekly Counseling Department meetings provide trainings on updates and changes regarding the Student Success and Support Act. In addition, to annual trainings and updates on transfer, career, EOPS, CalWORKs, TRIO and other program specific conferences. We will also support CSU/UC Counselor's Conferences and the RP Group Strengthening Student Success Conferences. In addition, we will also support Career Development through the *Inner Heroes Certification Training* which meets the California SB-1456 goal in academic and career counseling.

Follow-up Services: Researching best practices in working with at-risk students and sharing these practices at counseling department trainings. Three to four trainings each semester are scheduled for the counseling department staff.

SECTION V. ATTACHMENTS

The following attachments are required:

Attachment A, *Student Success and Support Program Plan Participants*. Please complete the form below of all individuals with their job title, who were involved with creating the SSSP Plan.

Attachment B, *Organizational Chart*. Please attach a copy of your colleges' organization chart and highlight the Student Success and Support Program Coordinator's position. Please include all positions that work directly in the program providing SSSP services, including those listed in the narrative above. If your district has a district SSSP Coordinator in addition to the college SSSP Coordinator, or other district staff included in your plan, please attach a copy of the district organization chart and highlight the district SSSP Coordinator's position (if it is not identified as such on the chart).

Attachment C, *SSSP Advisory Committee*. Attach a list of the members of the college's SSSP Advisory Committee. This can be a list of individuals and their positions or simply the positions. If the committee is chaired by someone other than the SSSP Coordinator, please highlight the chair on the list of members, and identify the correct name of the committee, (advisory committee, coordinating council, steering committee, etc.). If the committee has standing or formalized subcommittees (e.g., SEP, orientation, budget, training, etc.), please list those also.

ADDITIONAL INFORMATION

Questions regarding the development of the college SSSP Plan may be directed to:

Mia Keeley
California Community College Chancellor's Office
mkeeley@cccco.edu
(916) 323-5953

Attachment A

Student Success and Support Program Plan Participants

Title 5 Section 55510 (11)(b) requires that the Student Success and Support Program Plan for each college "be developed in consultation with representatives of the academic senate, students, administrators, and staff with appropriate expertise." Please list the persons and their stakeholder group (e.g., Student Senate, Academic Senate, Curriculum Committee, etc.), of the individuals who participated in the development and writing of this Plan. Add more pages as needed.

Name: Lizette Bricker Title: Dean of Counseling Services

Stakeholder Group: Counseling Department

Name: Chialin Hsieh Title: Dean of Planning, Research, and Institutional Effectiveness (PRIE)

Stakeholder Group: Administrative Planning Council

Name: Doug Hirzel/Debbie Joy Title: Co-Chairs of Planning and Budgeting Council (PBC)

Stakeholder Group: Planning and Budgeting Council (PBC)

Name: Evelyn Valenzuela Title: President Associated Students of Cañada College

Stakeholder Group: Associated Student of Cañada College (ASCC)

Name: Jessica Kaven/Gregory Anderson Title: Co-Chairs of Instructional Planning Council

Stakeholder Group: Instructional Planning Council (IPC)

Name: Ruth Miller/Kim Lopez Title: Co-Chairs Student Services Planning Council

Stakeholder Group: Student Services Planning Council (SSPC)

Name: Doug Hirzel Title: Academic Senate

Stakeholder Group: Academic Senate

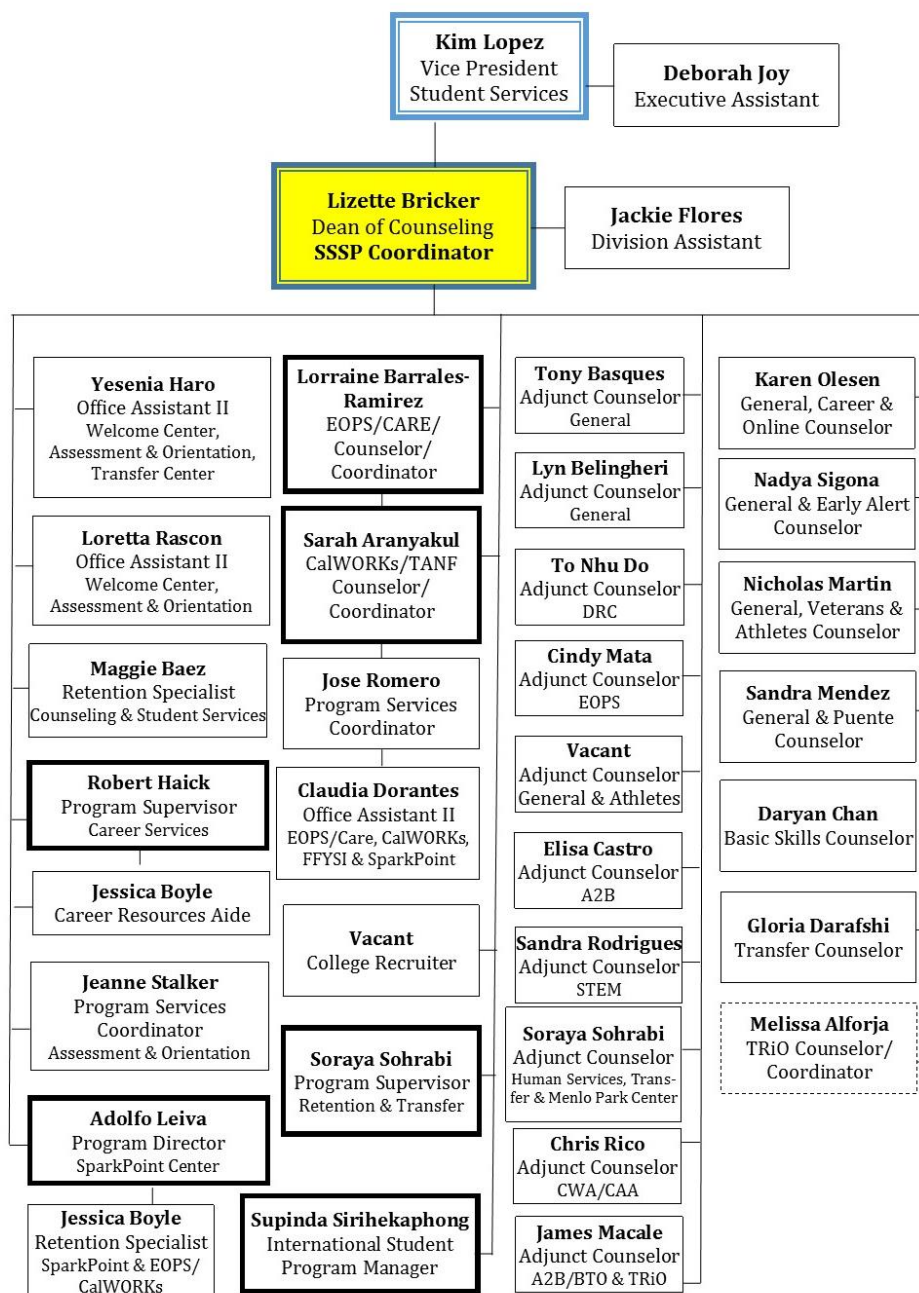
Name: Debbie Joy Title: Classified Senate President

Stakeholder Group: Classified Senate

Attachment B

Organizational Chart

Please attach a copy of your colleges' organization chart and highlight the Student Success and Support Program Coordinator's position. Please include all positions that work directly in the program providing SSSP services, including those listed in the narrative above. If your district has a district SSSP Coordinator in addition to the college SSSP Coordinator, or other district staff included in your plan, please attach a copy of the district organization chart and highlight the district SSSP Coordinator's position (if it is not identified as such on the chart).



Attachment C

SSSP Advisory Committee

Attach a list of the members of the college's SSSP Advisory Committee. This can be a list of individuals and their positions or simply the positions. If the committee is chaired by someone other than the SSSP Coordinator, please highlight the chair on the list of members, and identify the correct name of the committee, (advisory committee, coordinating council, steering committee, etc.). If the committee has standing or formalized subcommittees (e.g., SEP, orientation, budget, training, etc.), please list those also.

Student Services Planning Council

Melissa Alforja	Faculty Coordinator (Trio)
Sarah Aranyakul	Counselor/Coordinator (CalWORKs)
Max Hartman	Director (DRC)
Sunny Choi	Program Supervisor (A2B)
Luanne Canestro	Financial Aid Reconciliation Specialist
Margie Carrington	Director (Financial Aid)
Noel Chavez	College Recruiter
Gloria Darafshi	Counselor
Patricia Guevarra	Program Services Coordinator (Veterans, TRiO, BTO)
Robert Haick	Program Supervisor (Career Center)
Chialin Hsieh	Dean of Planning, Research and Institutional Effectiveness
Deborah Joy	Executive Assistant, VPSS Office
Lizette Bricker	Dean of Counseling Services
Carlos Luna	Library Support Specialist
Misha Maggi	Student Life and Leadership Manager
Ruth Miller	Registrar (Co-Chair SSPC)
Vacant	Program Services Coordinator (A2B)
Kim Lopez	Vice President of Student Services (Co-Chair SSPC)
Supinda Sirihekaphong	International Student Program Manager
Soraya Sohrabi	Transfer Program Services Supervisor
Jeanne Stalker	Program Services Coordinator (Assessment and Orientation)
Diva Ward	Learning Center Manager

